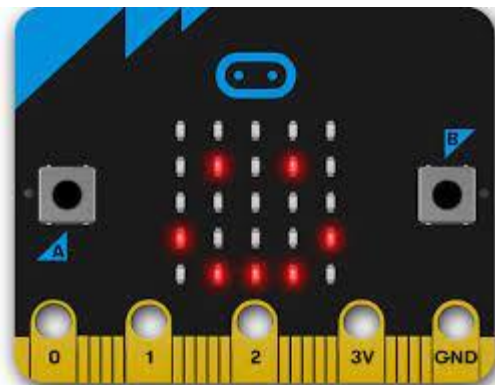


# Microbit Introduction

What pieces are in the Microbit?



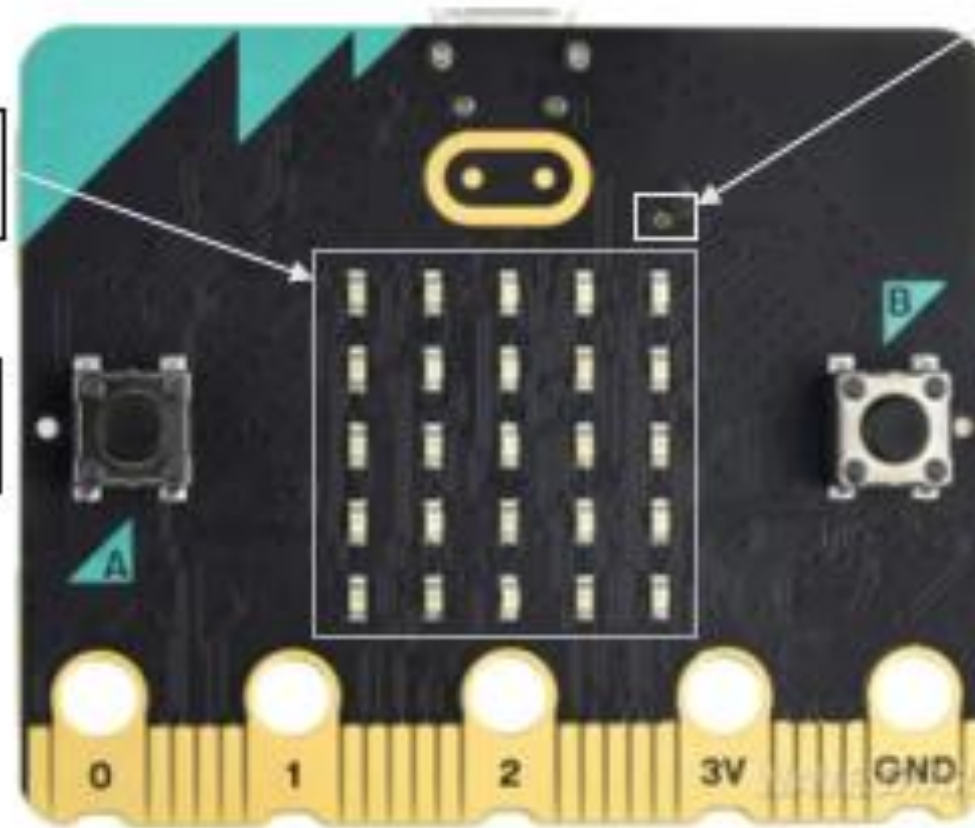
The Front of  
the Microbit

25 LEDs

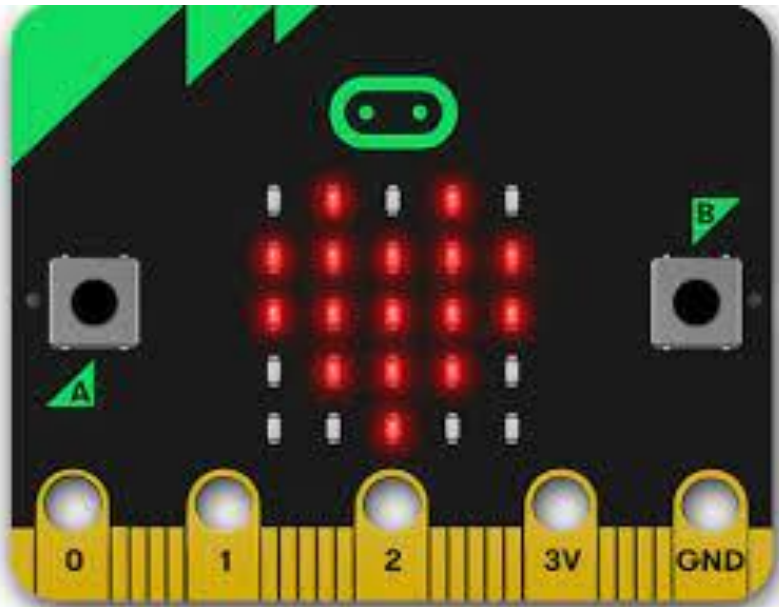
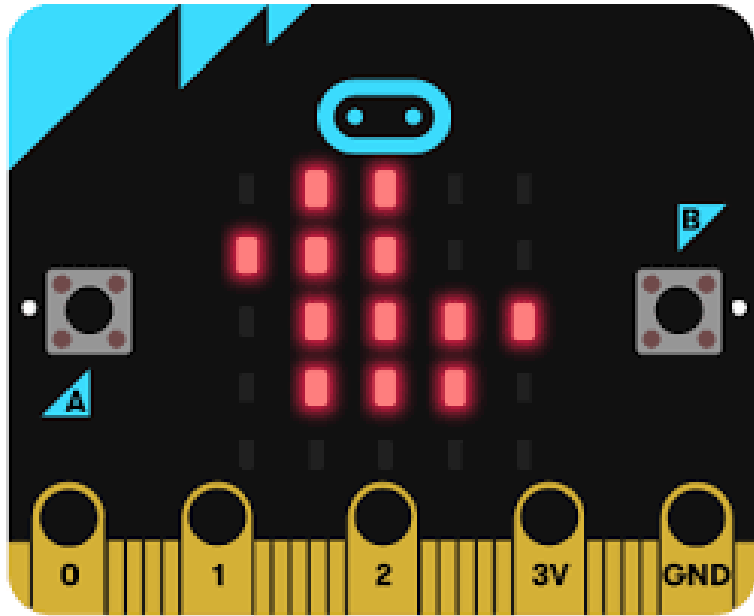
Button A

Microphone

Button B



Edge connector

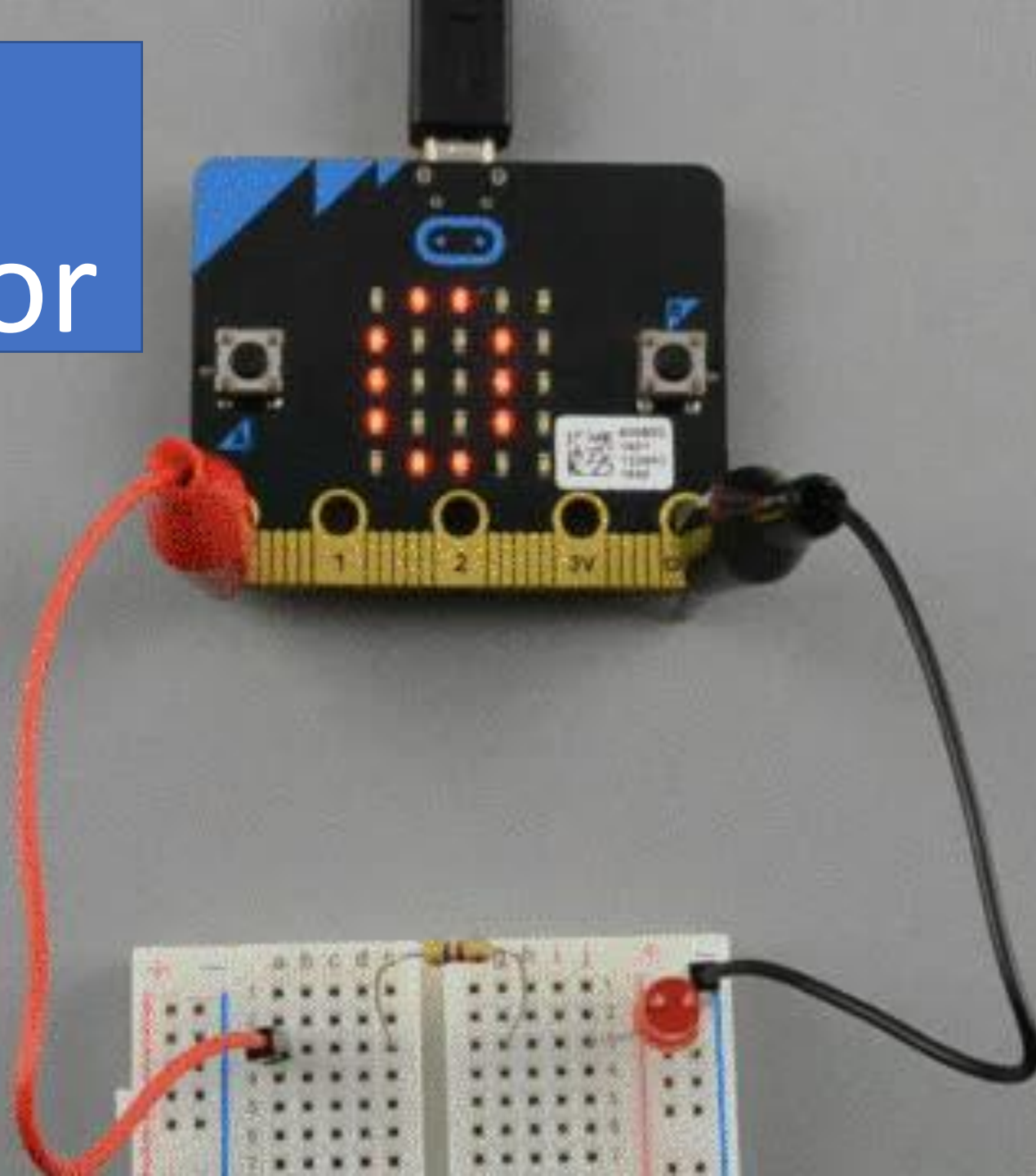


# LEDs

- **L**ight-**E**mitting **D**iode (a light)
- An output device
- You can program them to change

# Edge Connector

- Can link into other hardware

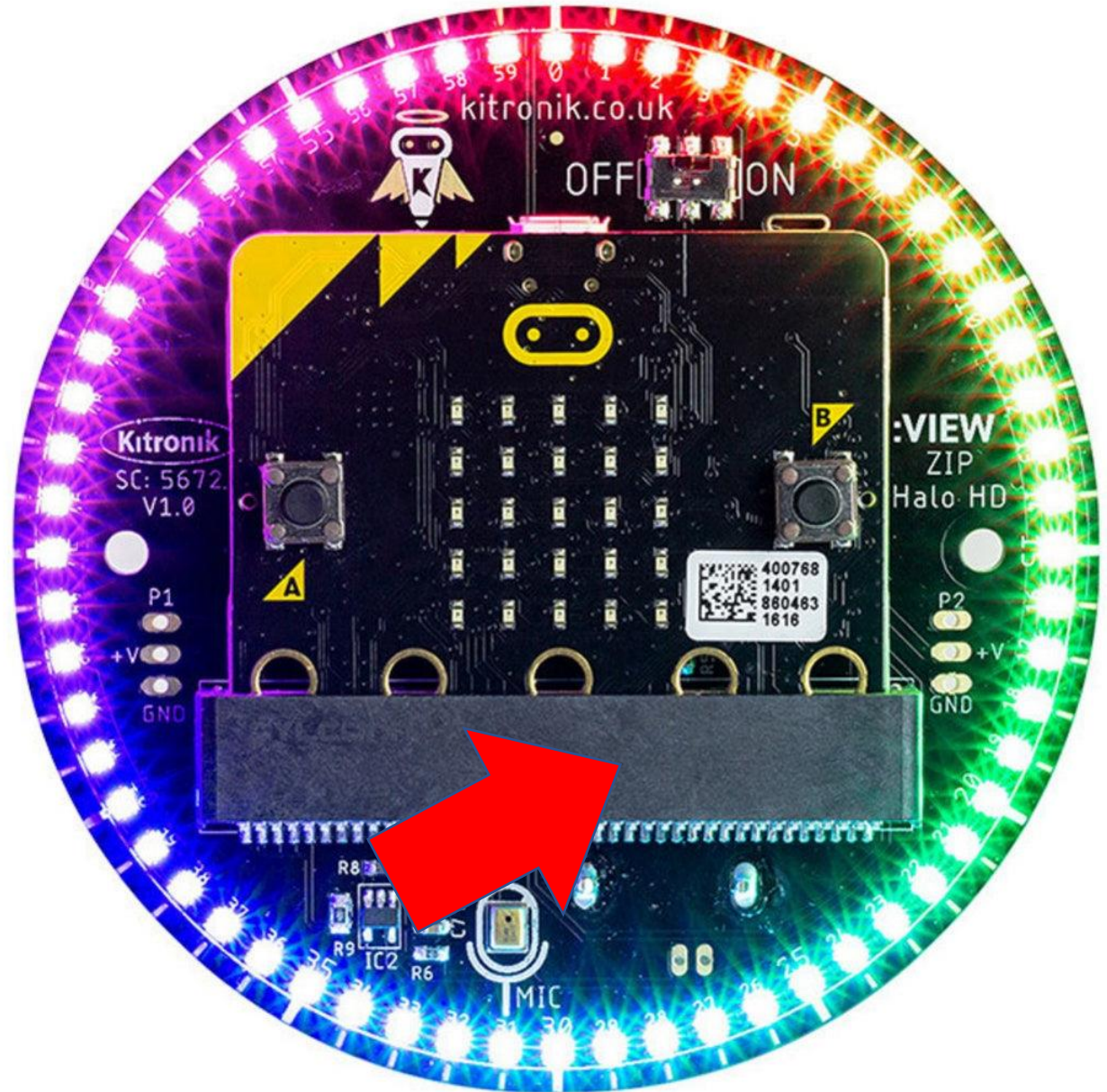


- Uses edge connector and a motor to build an automatic watering supply



# Edge Connector

- Linking into a HALO light system



# The Back of the Microbit

USB Connector

Reset Button

Power Supply

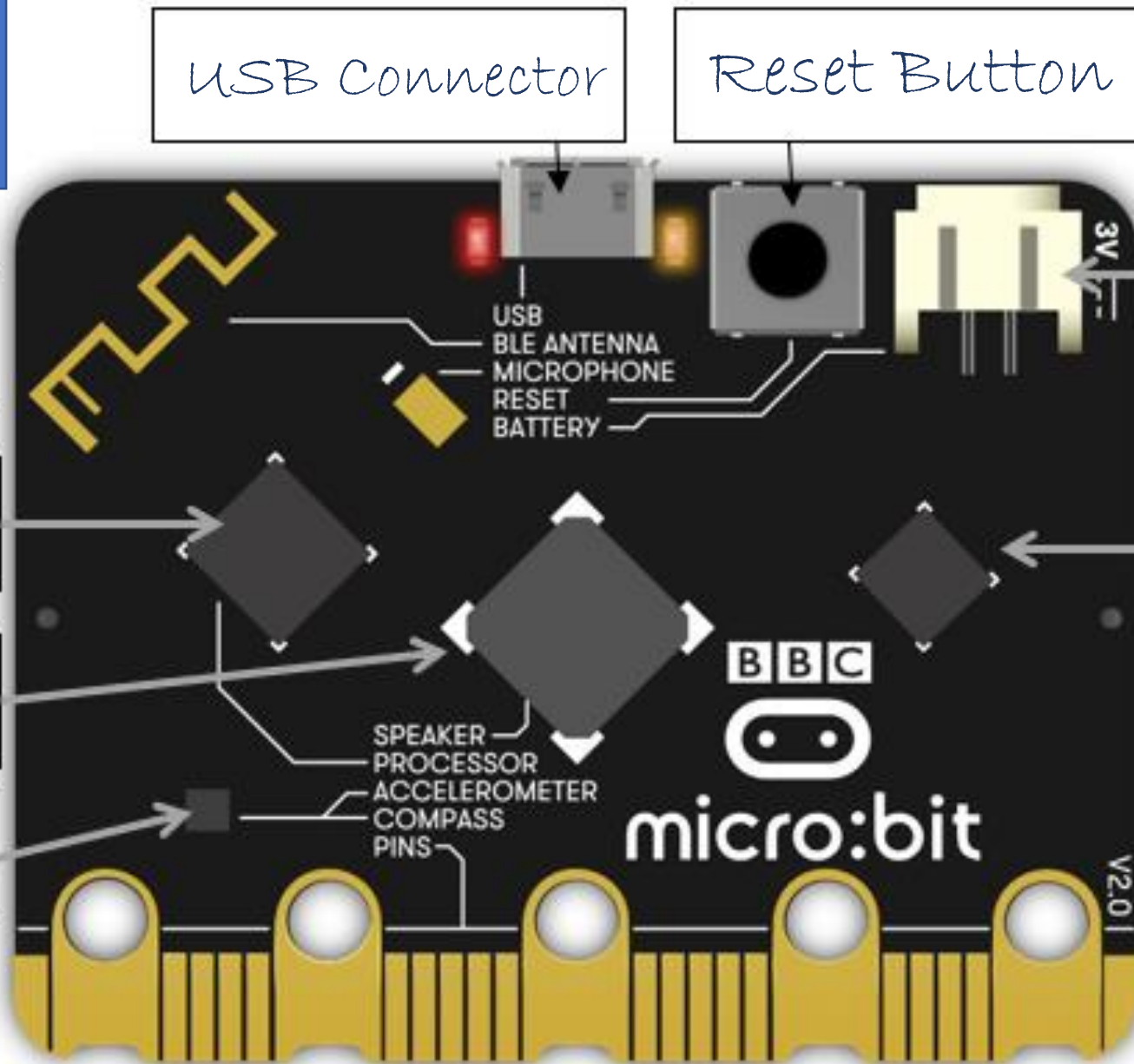
Radio Antenna

CPU + Memory

Speaker

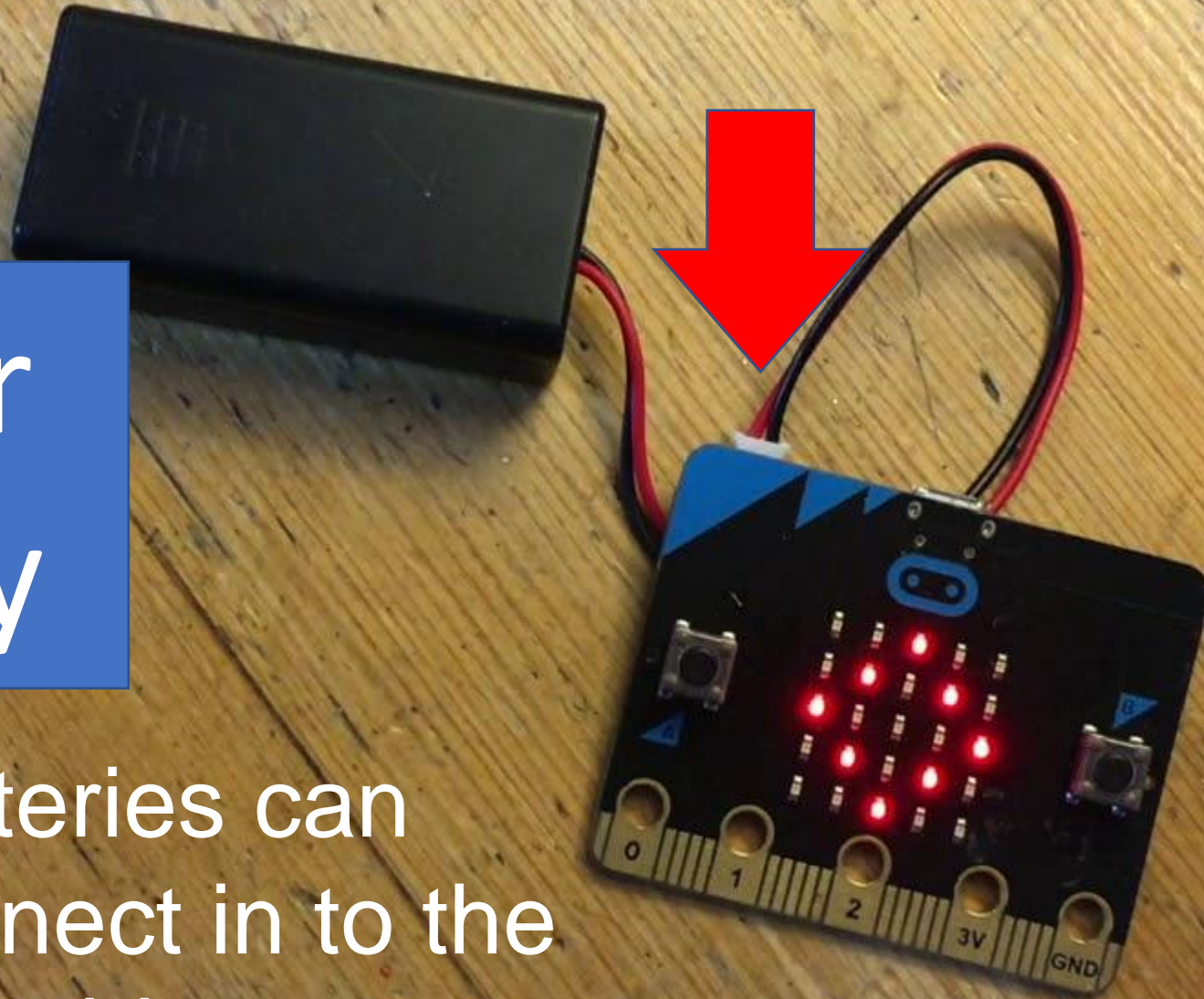
Accelerometer

USB Processing Chip



# Power Supply

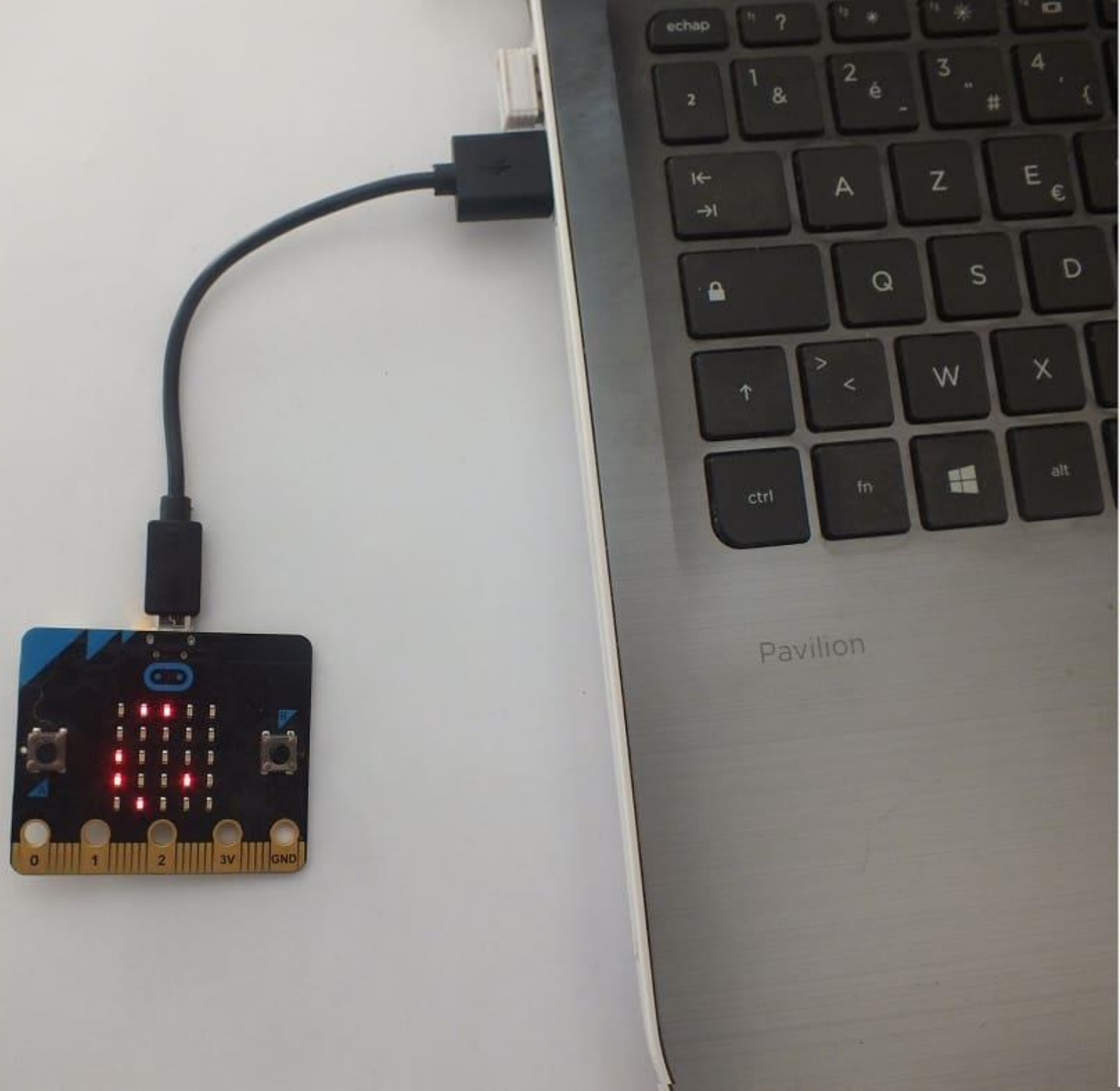
- Batteries can connect in to the Microbit





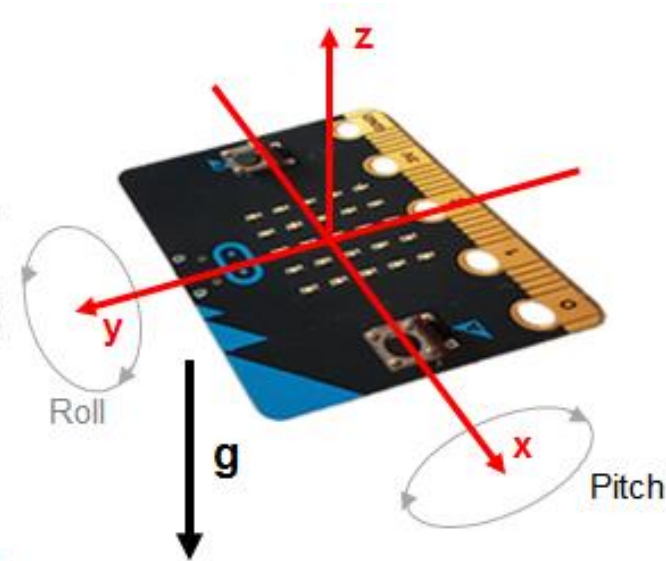
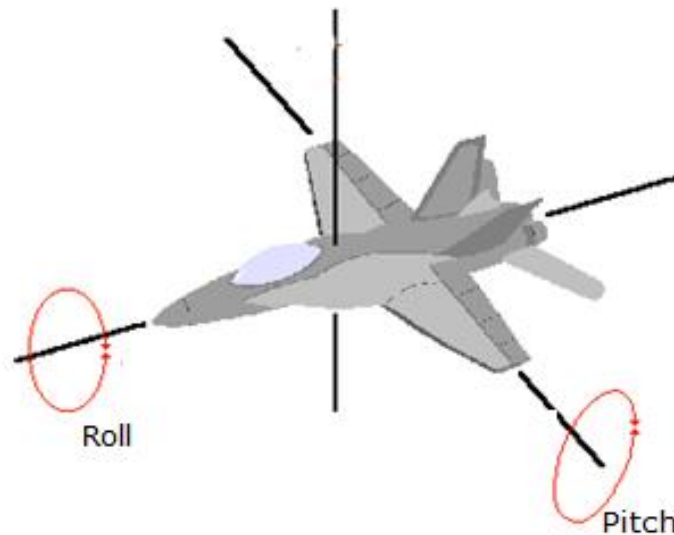
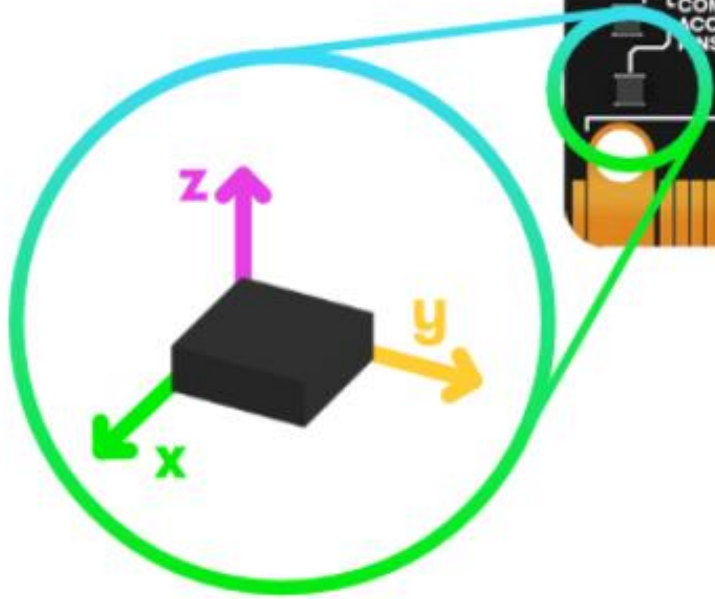
# USB connector

- How we connect to the computer to move our programs.



# Accelerometer

- Tells if and how the Microbit moved
- An Input Device



# Microbit Motorbike simulator

- built using the accelerometer



CPU

- **C**entral **P**rocessing **U**nit
- Also called the chip or processor
- Brain of the computer

