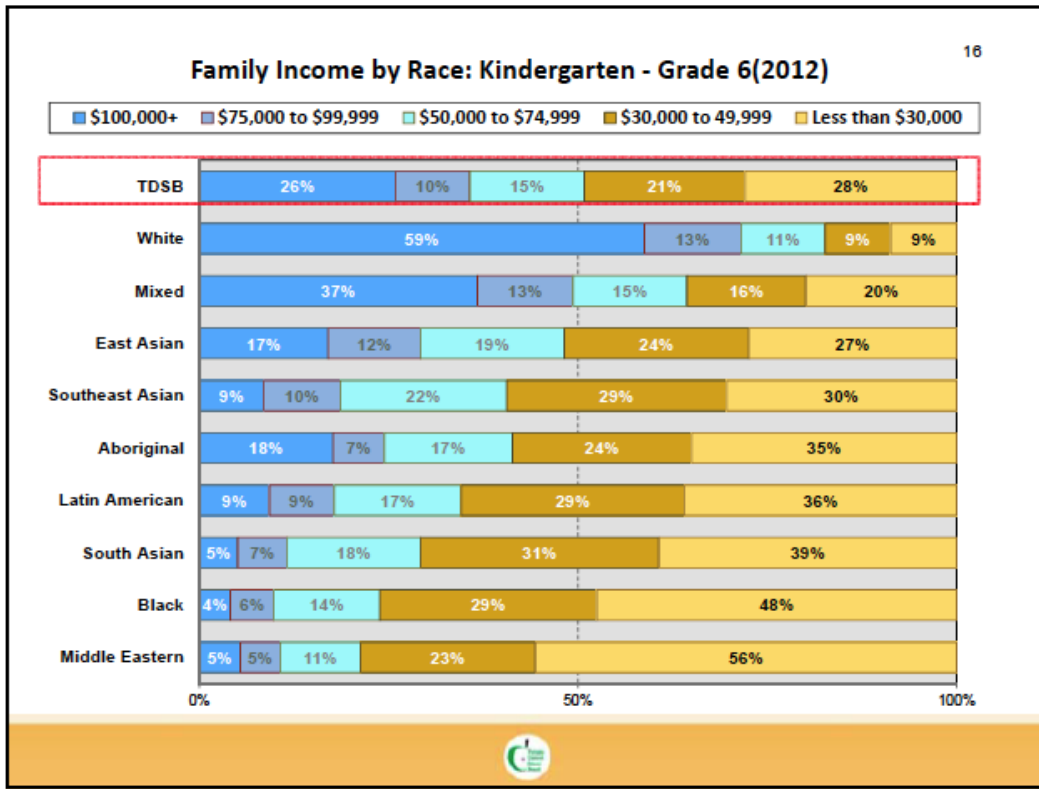
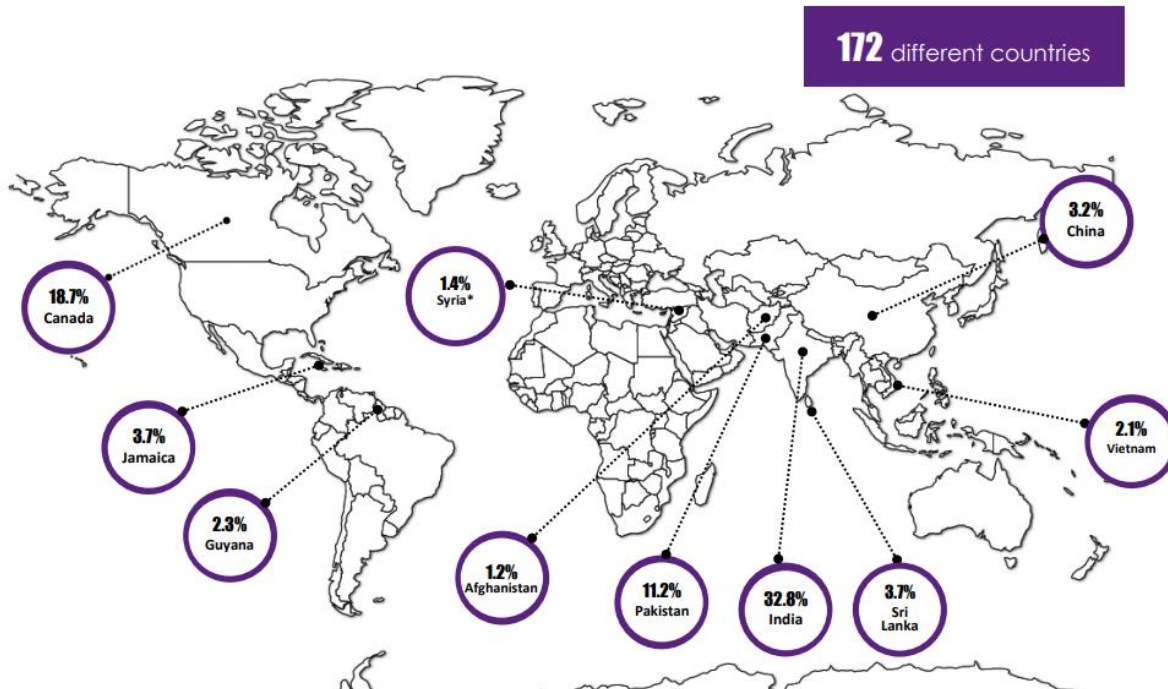


Check Your Understanding Questions

1. Identify research question and the variables in each graph.



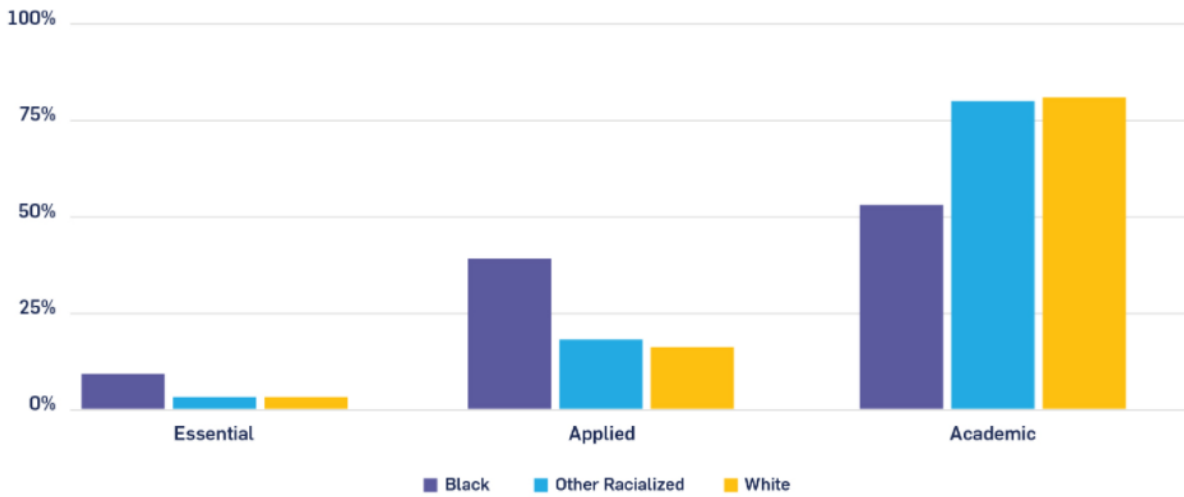
Top 10 Countries of Birth for All Parents/Guardians of Peel Board Students



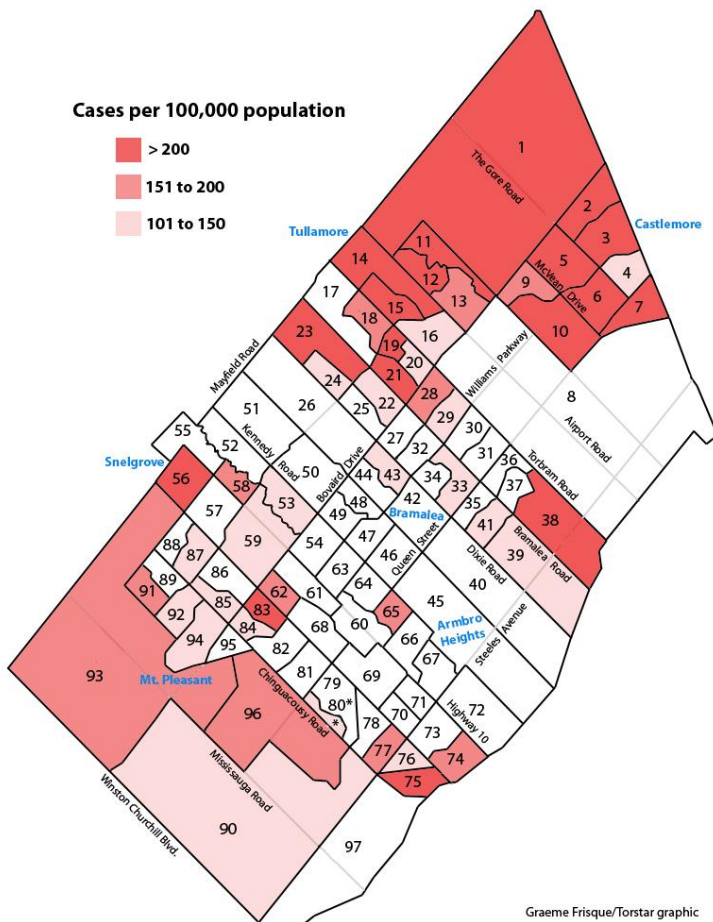
*Syria = Syrian Arab Republic

**All Parents/Guardians – Combination of Parent/Guardian 1 and Parent/Guardian 2 responses; these data represent 234,368 of 254,754 responses (or 92.0%).

Figure 4: Programs of Study by Race at Toronto District School Board (2006-2011)



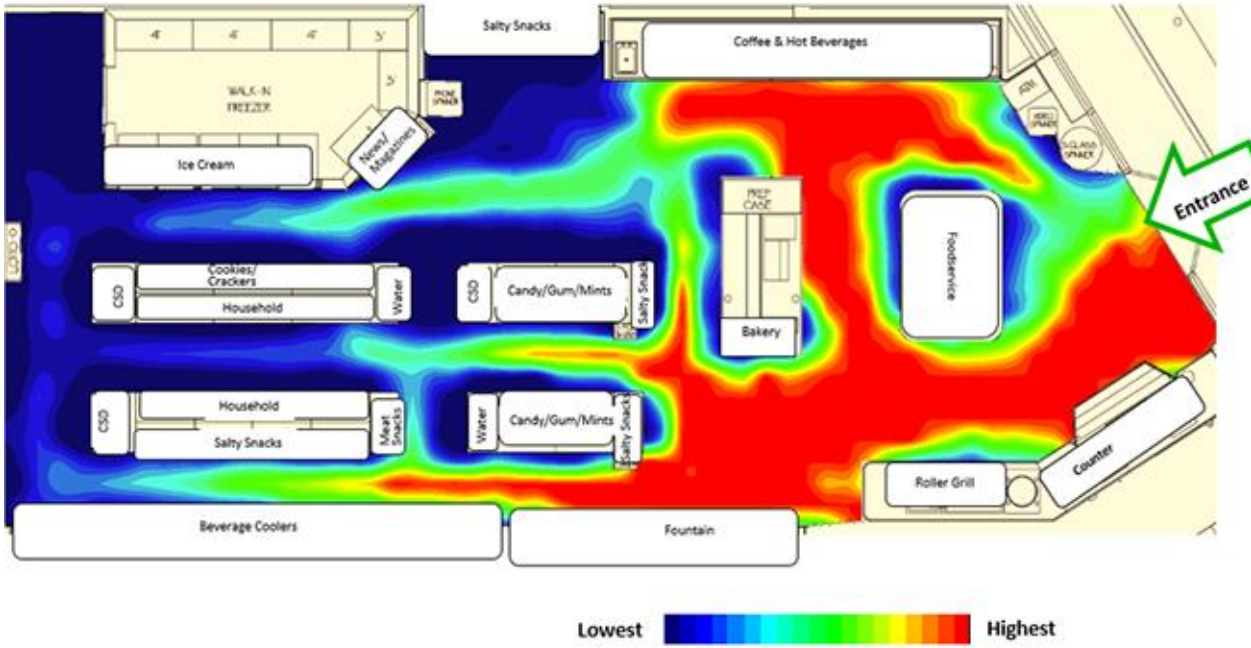
COVID -19 Cases in Brampton Between Oct 24-31, Gathered by Peel Health



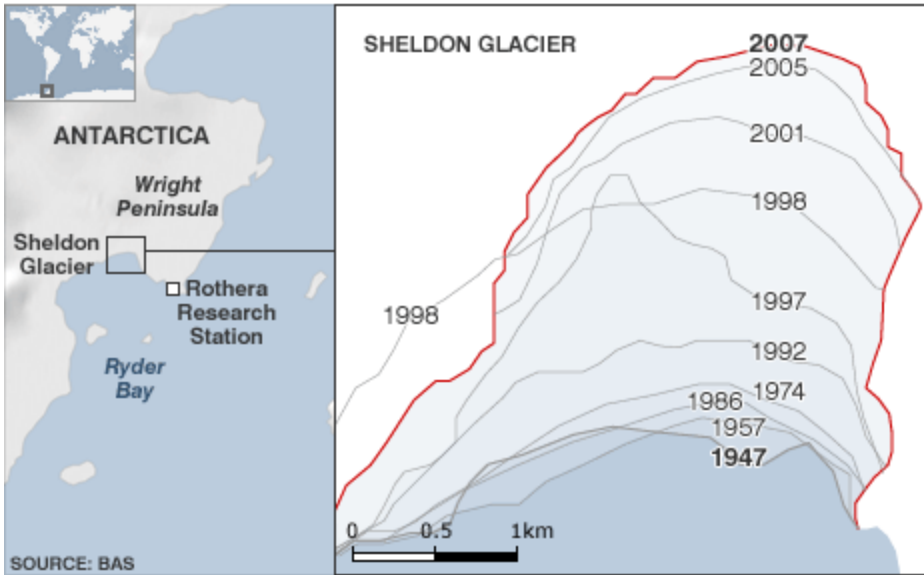
Graph 3 – Three variables

Gathered by security cameras as people shop in the store.

Right Entrance/Right Counter: Traffic Map



Retreat of Sheldon Glacier 1947-2007

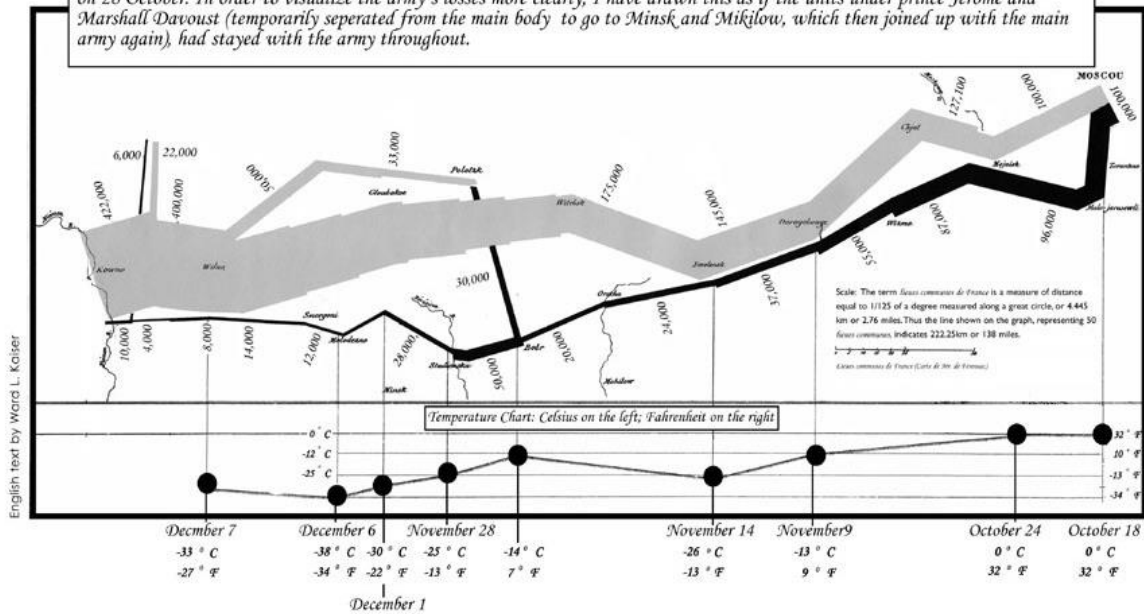


Graph 4 – 6 Variables

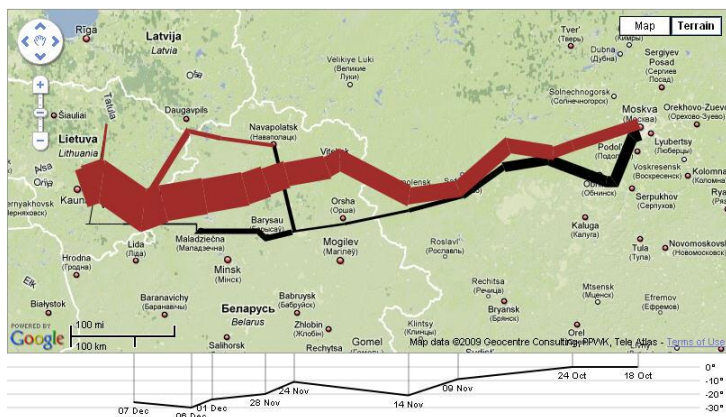
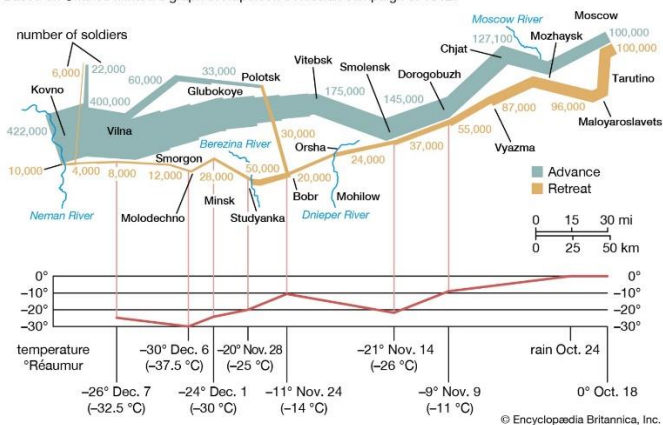
Map representing the losses over time of French army troops during the Russian campaign, 1812-1813. Constructed by Charles Joseph Minard, Inspector General of Public Works retired.

Paris, 20 November 1869

The number of men present at any given time is represented by the width of the grey line; one mm. indicates ten thousand men. Figures are also written besides the lines. Grey designates men moving into Russia; black, for those leaving. Sources for the data are the works of messrs. Thiers, Segur, Fezensac, Chambray and the unpublished diary of Jacob, who became an Army Pharmacist on 28 October. In order to visualize the army's losses more clearly, I have drawn this as if the units under prince Jerome and Marshall Davoust (temporarily seperated from the main body to go to Minsk and Mikilow, which then joined up with the main army again), had stayed with the army throughout.



Based on Charles Minard's graph of Napoleon's Russian campaign of 1812.



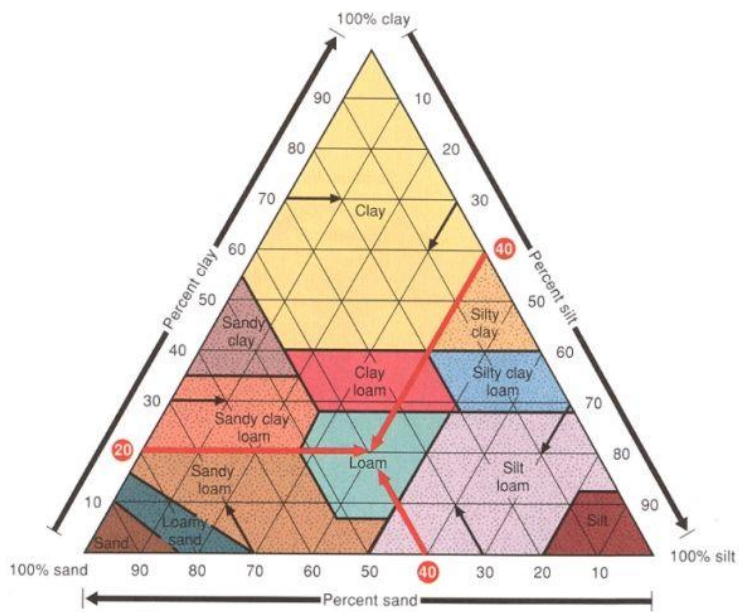


FIGURE 13.6 Soil Texture Texture depends on the percentage of clay, silt, and sand particles in the soil. A loam soil has the best texture for most crops. As shown in the illustration, if a soil were 40 percent sand, 40 percent silt, and 20 percent clay, it would be a loam.
 Source: Data from U.S. Soil Conservation Service.

Vermicomposting – Infiltration in Types of Soil

