



A baby T-Rex would  
have weighed between  
50 and 100 pounds  
(22 to 45 kilograms)  
at hatching.



An adult T-Rex weighed around 5 to 7 tons (10,000 to 14,000 pounds or 4,500 to 6,350 kilograms)

I wanted to know how long did it take to grow from 50 pounds to 10,000 pounds?





I wanted to know how long did it take to grow from 50 pounds to 10,000 pounds?

It seems like that must have taken a while... did it?



I wanted to know how long did it take to grow from 50 pounds to 10,000 pounds?

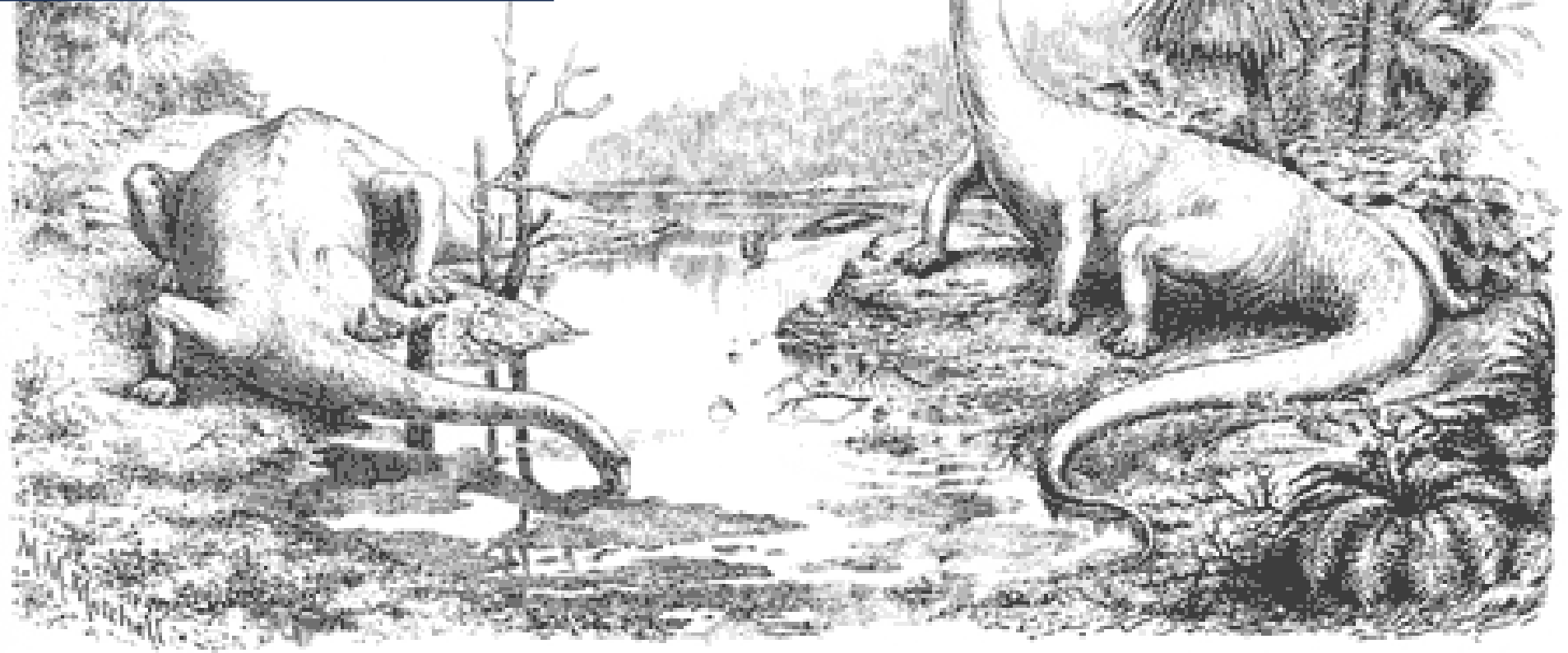
It seems like that must have taken a while... did it?

## Research Question #1

To allow it to grow so large, did a T-Rex live longer than humans?



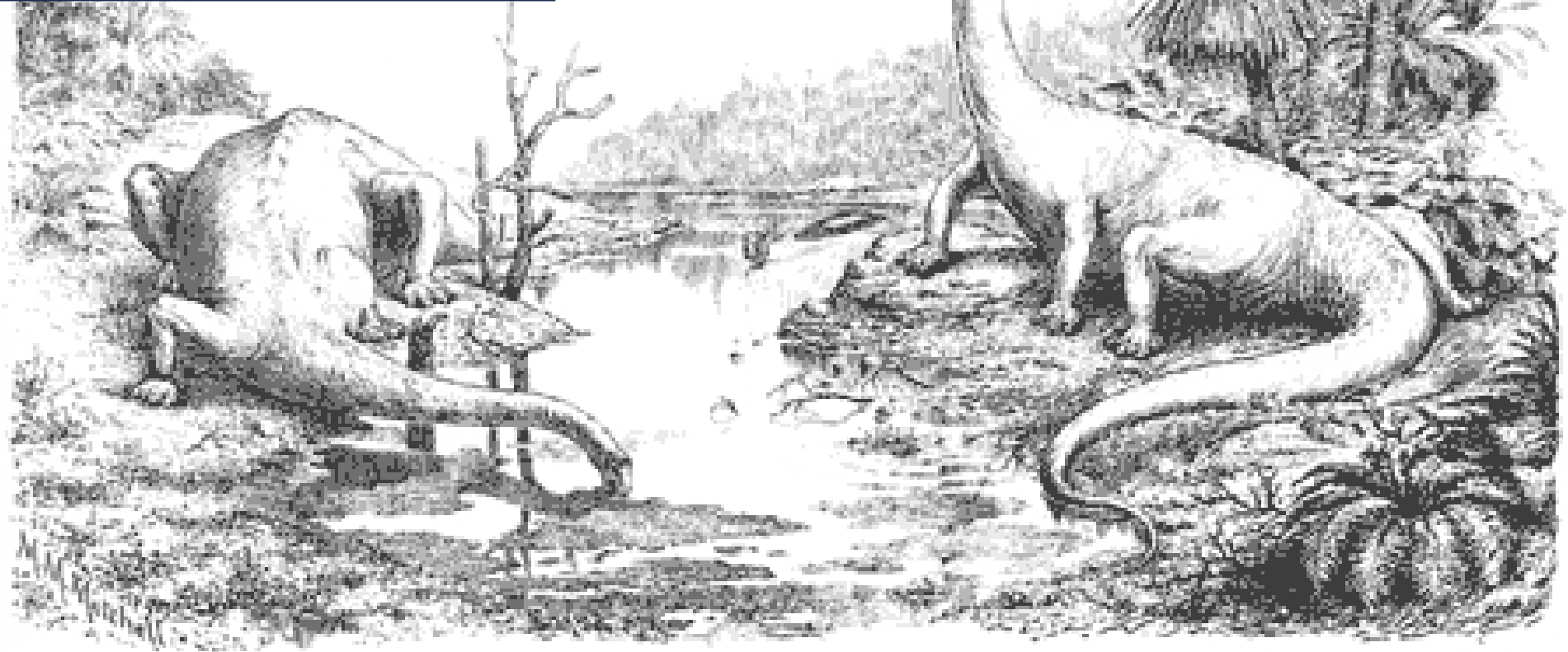
Early Paleontologists believed that, to get so large, the dinosaurs had to live for hundreds of years.



THE FORM AND ATTITUDES OF DIPLODOCUS

Early Paleontologists believed that, to get so large, the dinosaurs had to live for hundreds of years.

Is this true?

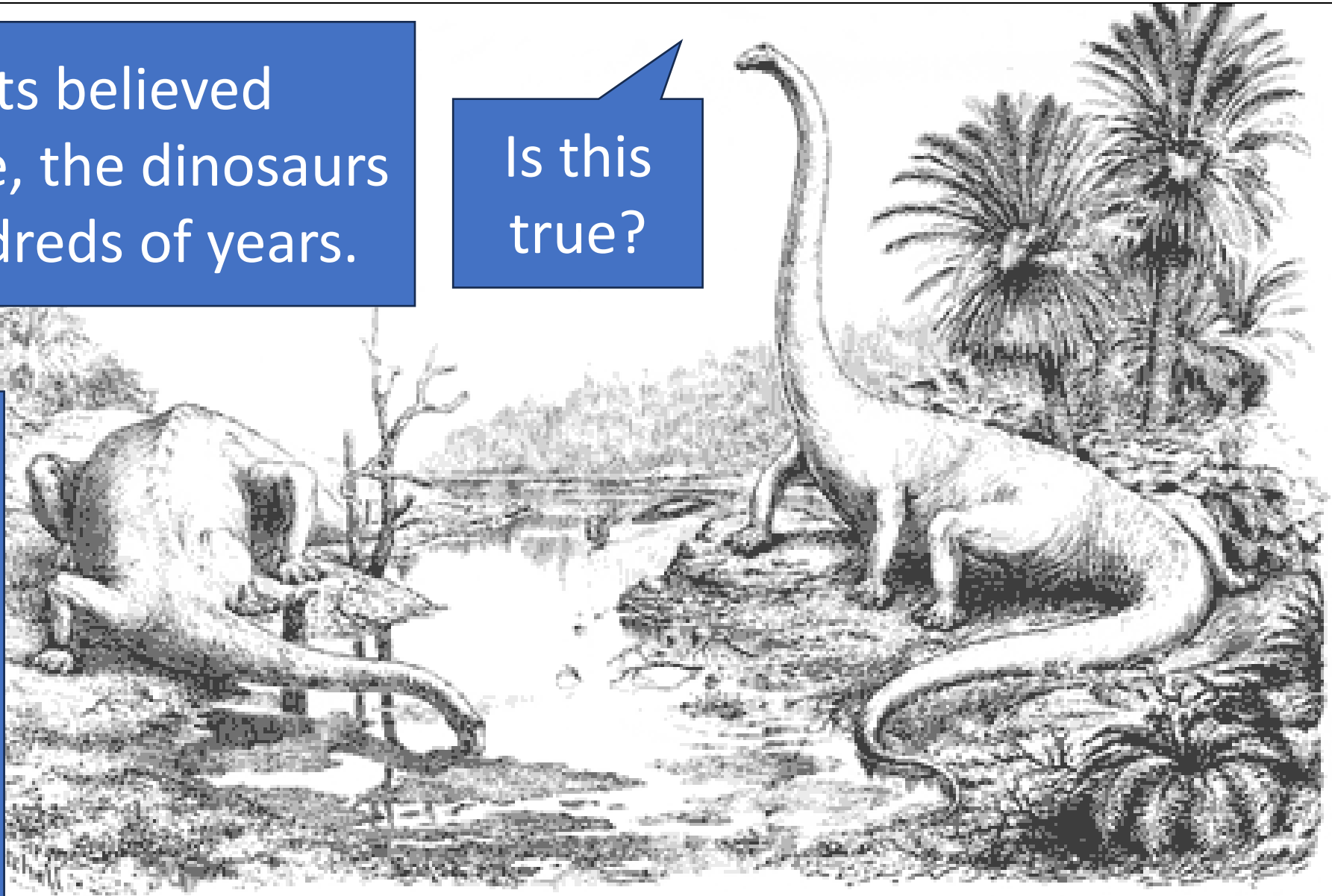


THE FORM AND ATTITUDES OF DIPLODOCUS

Early Paleontologists believed that, to get so large, the dinosaurs had to live for hundreds of years.

Is this true?

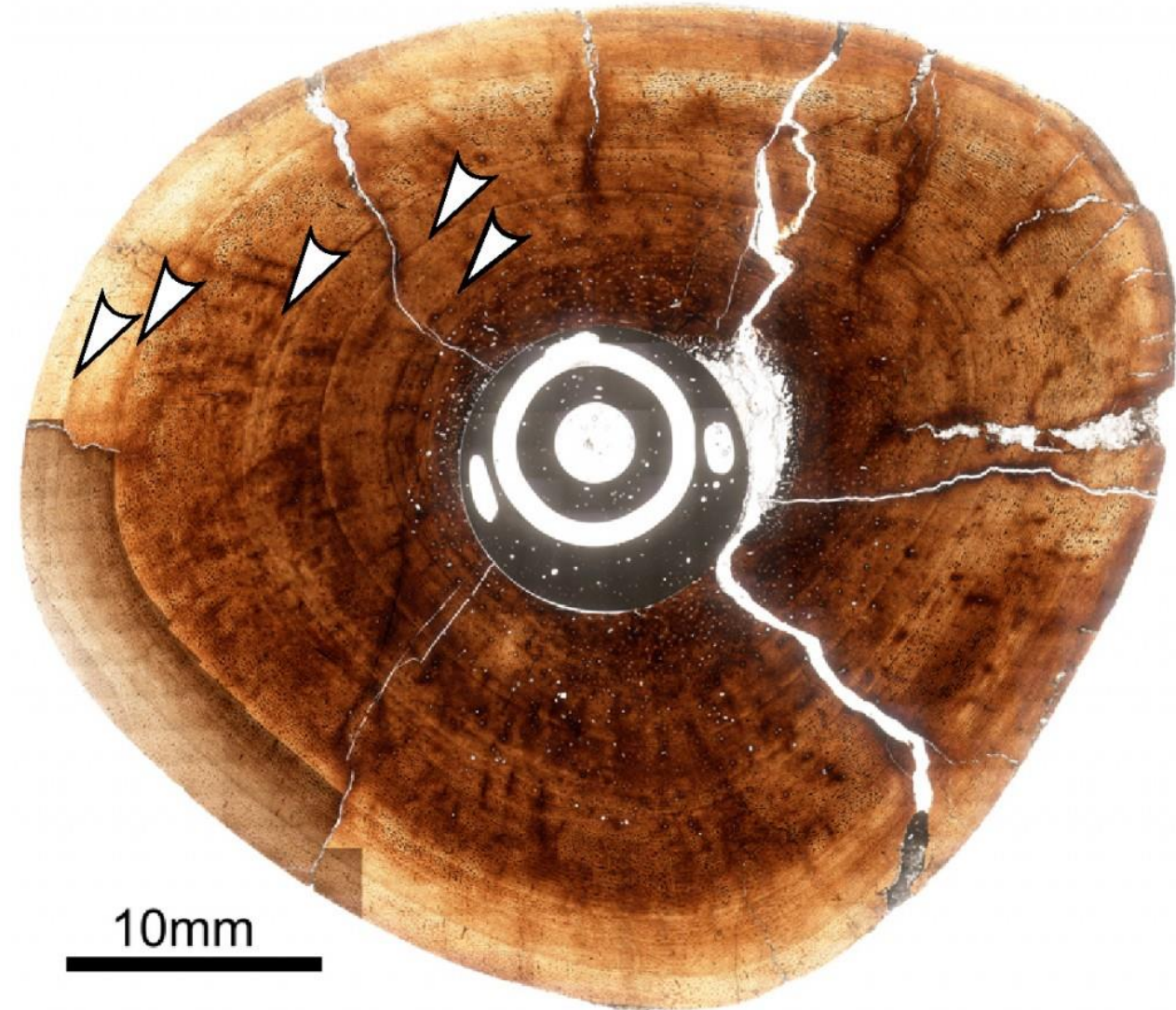
Did dinosaurs live for hundreds of years, or did they have more mammalian lifespans of years or decades?



THE FORM AND ATTITUDES OF DIPLODOCUS

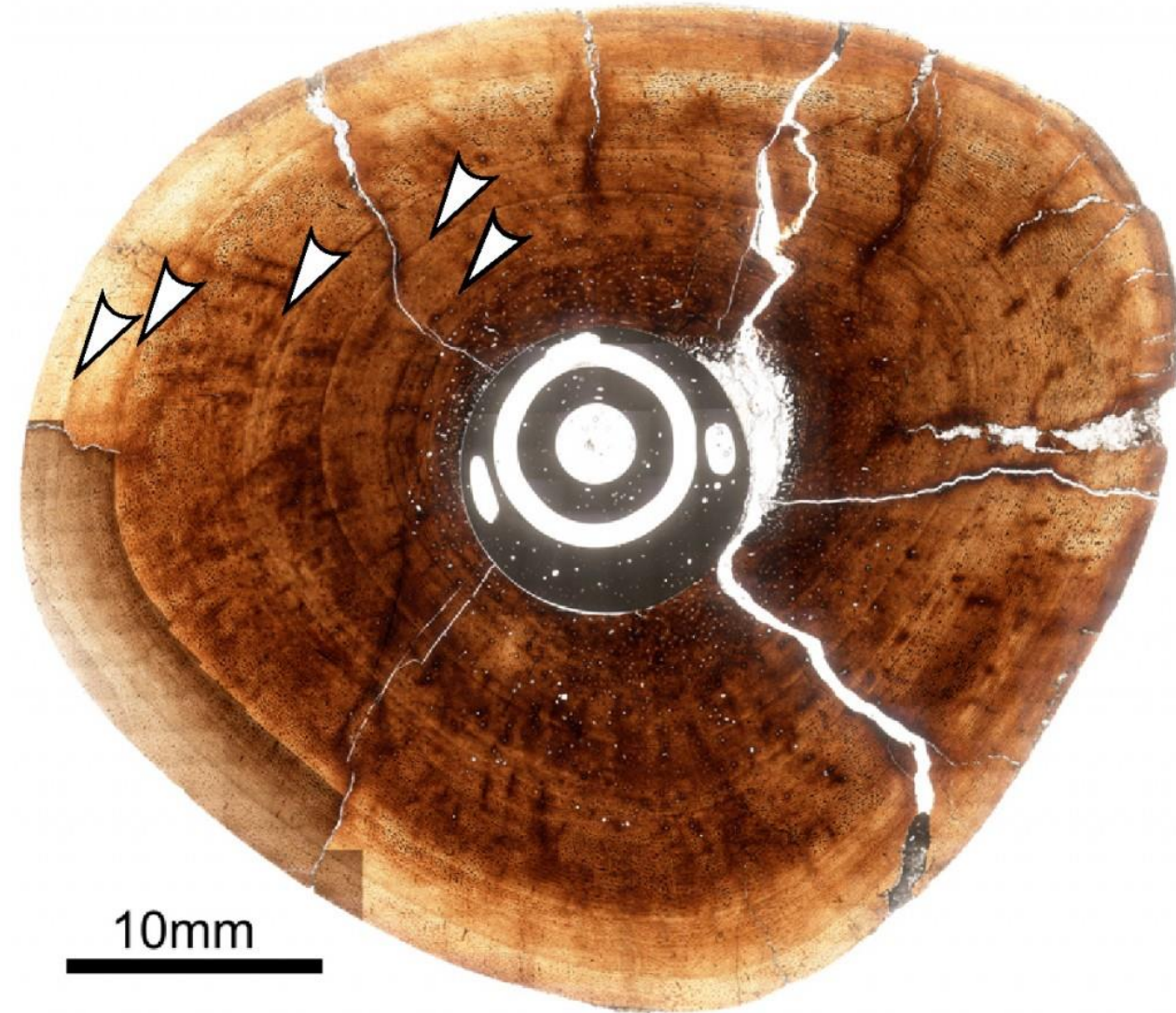


Now, to estimate dinosaur age and growth,  
Paleontologists take dinosaur bones and slice them very, very finely.



Now, to estimate dinosaur age and growth,  
Paleontologists take dinosaur bones and slice them very, very finely.

Then, they shine light through the slice and count the growth rings.

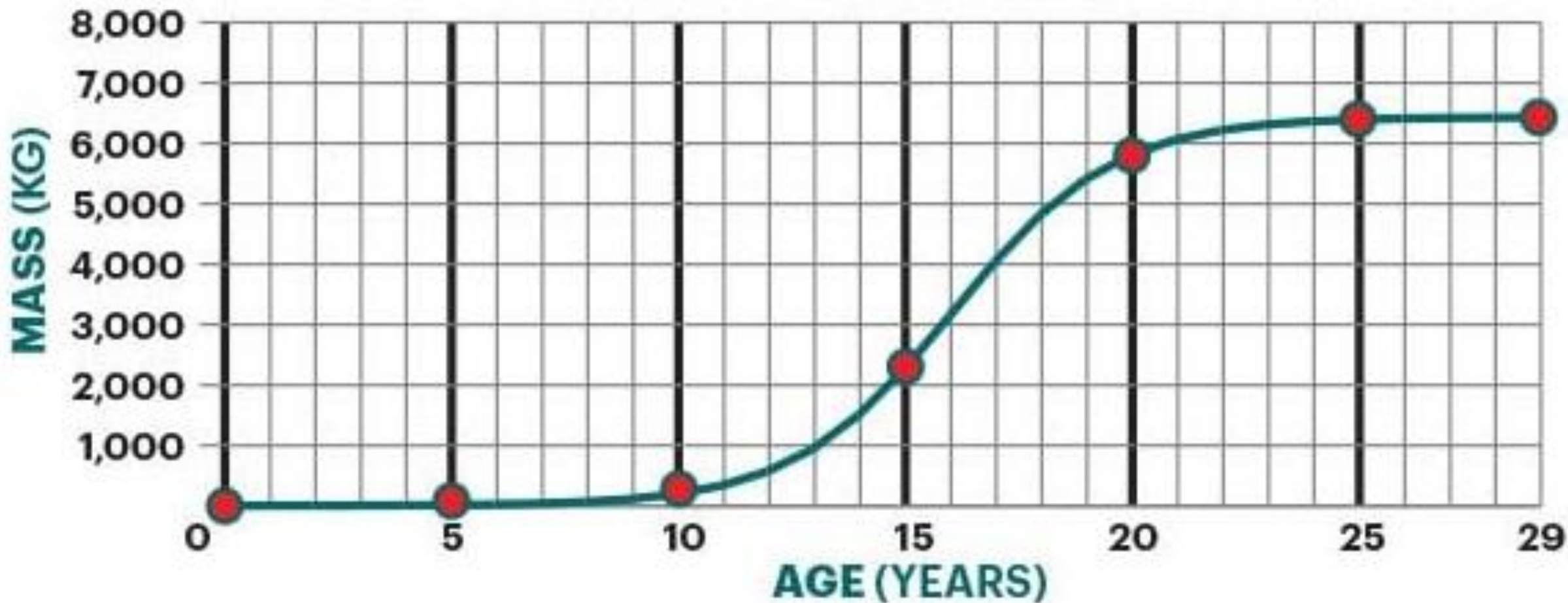






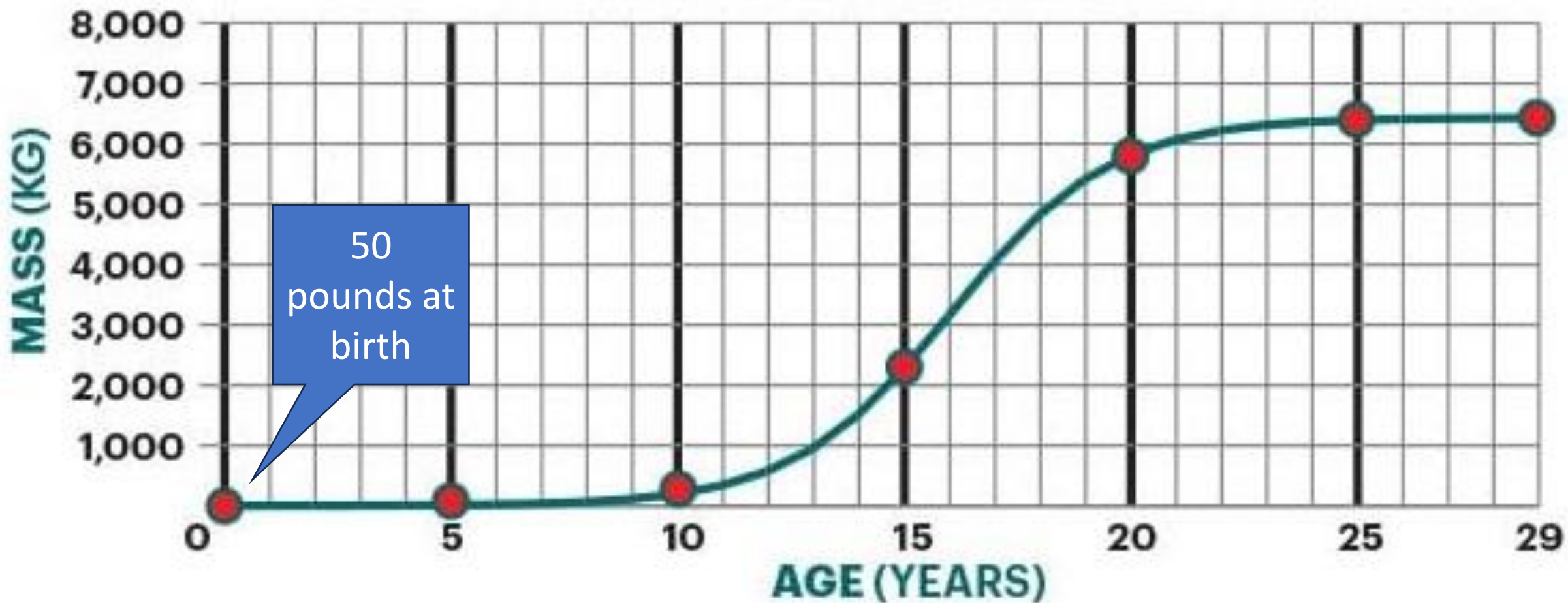
Paleontologists have discovered that the largest dinosaurs grew VERY quickly.

## GROWTH OF A T. REX



This graph shows the mass of a T-Rex throughout its life. Rapid growth happens between 10 and 20.

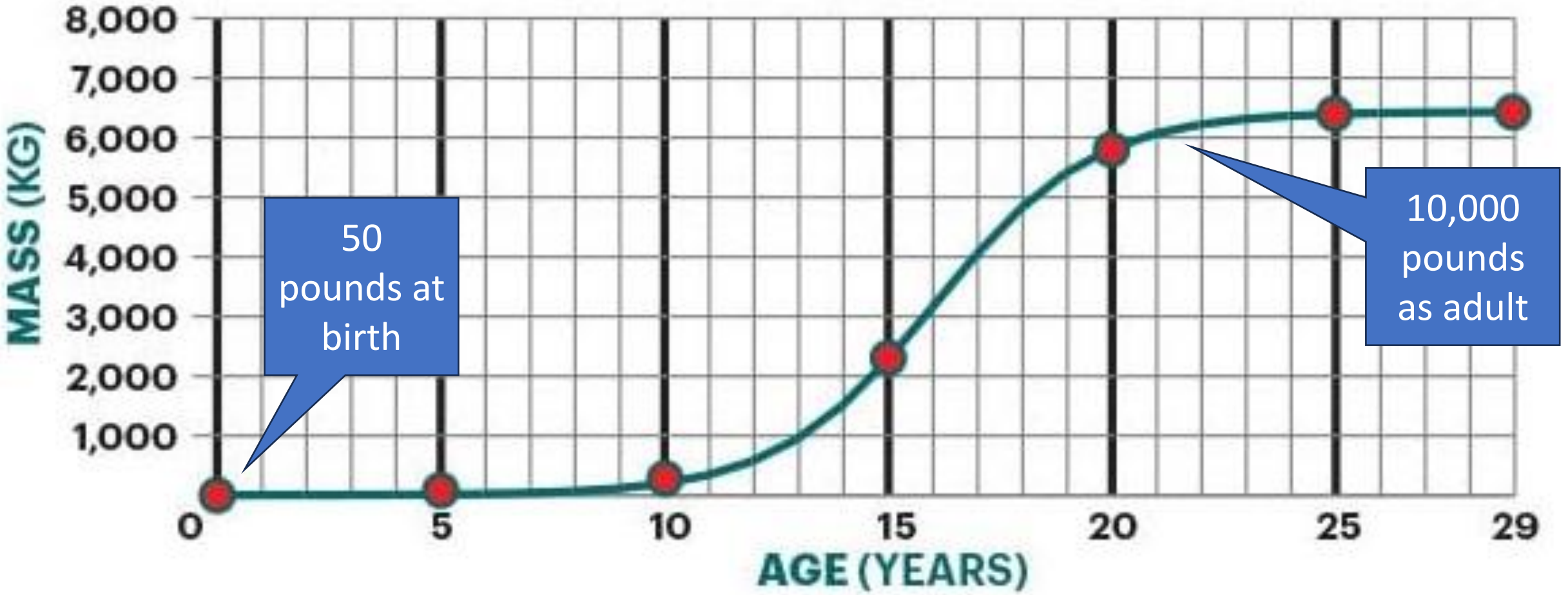
## GROWTH OF A T. REX



This graph shows the mass of a T-Rex throughout its life. Rapid growth happens between 10 and 20.



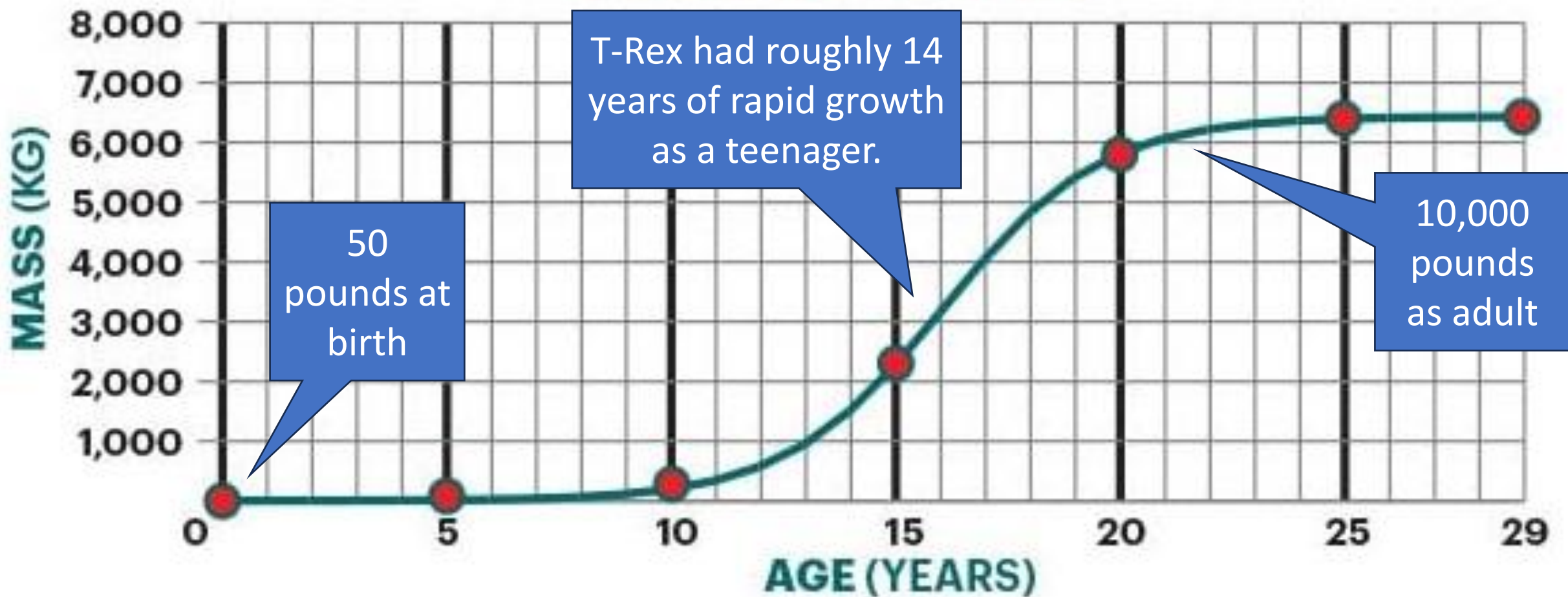
# GROWTH OF A T. REX



This graph shows the mass of a T-Rex throughout its life. Rapid growth happens between 10 and 20.

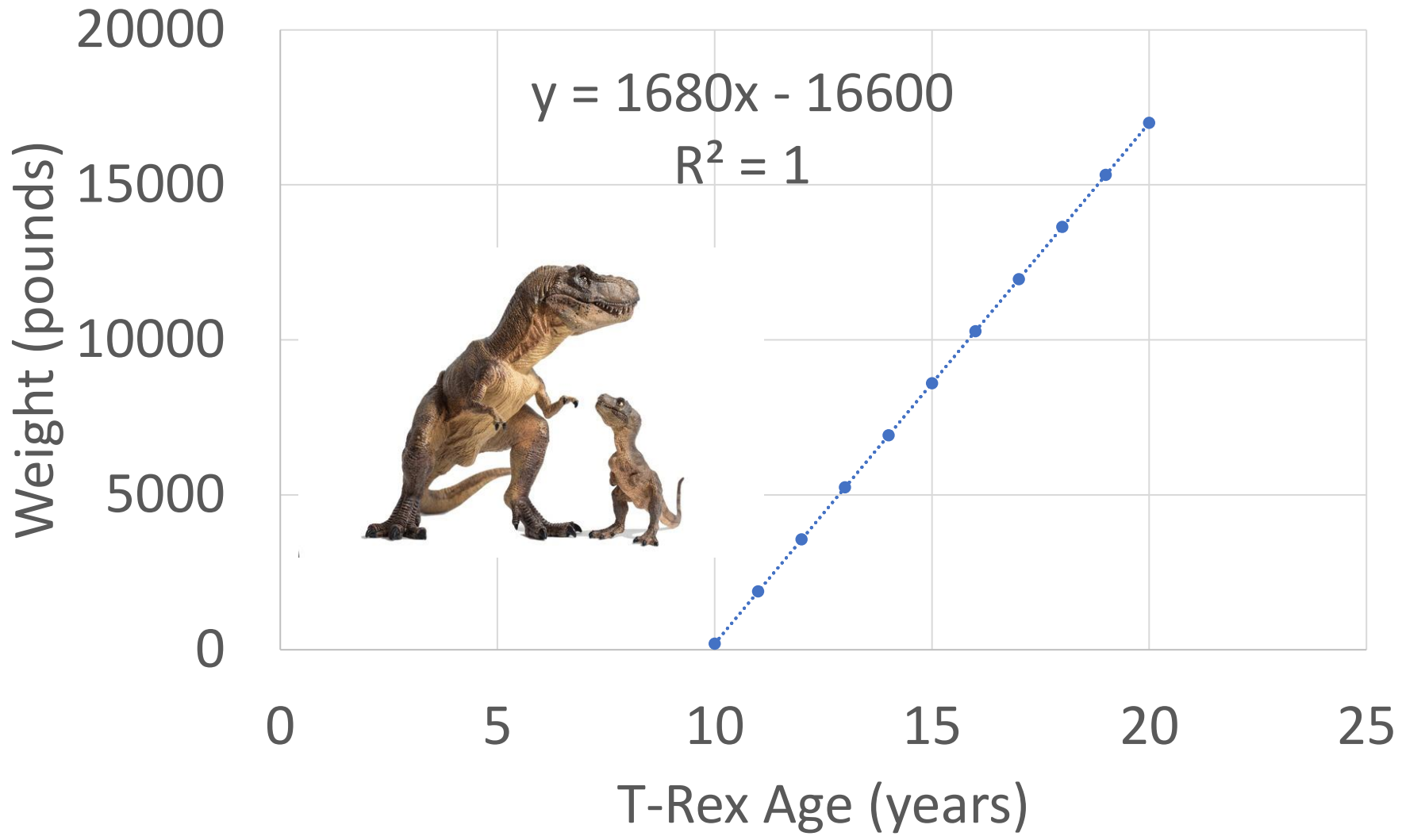


## GROWTH OF A T. REX

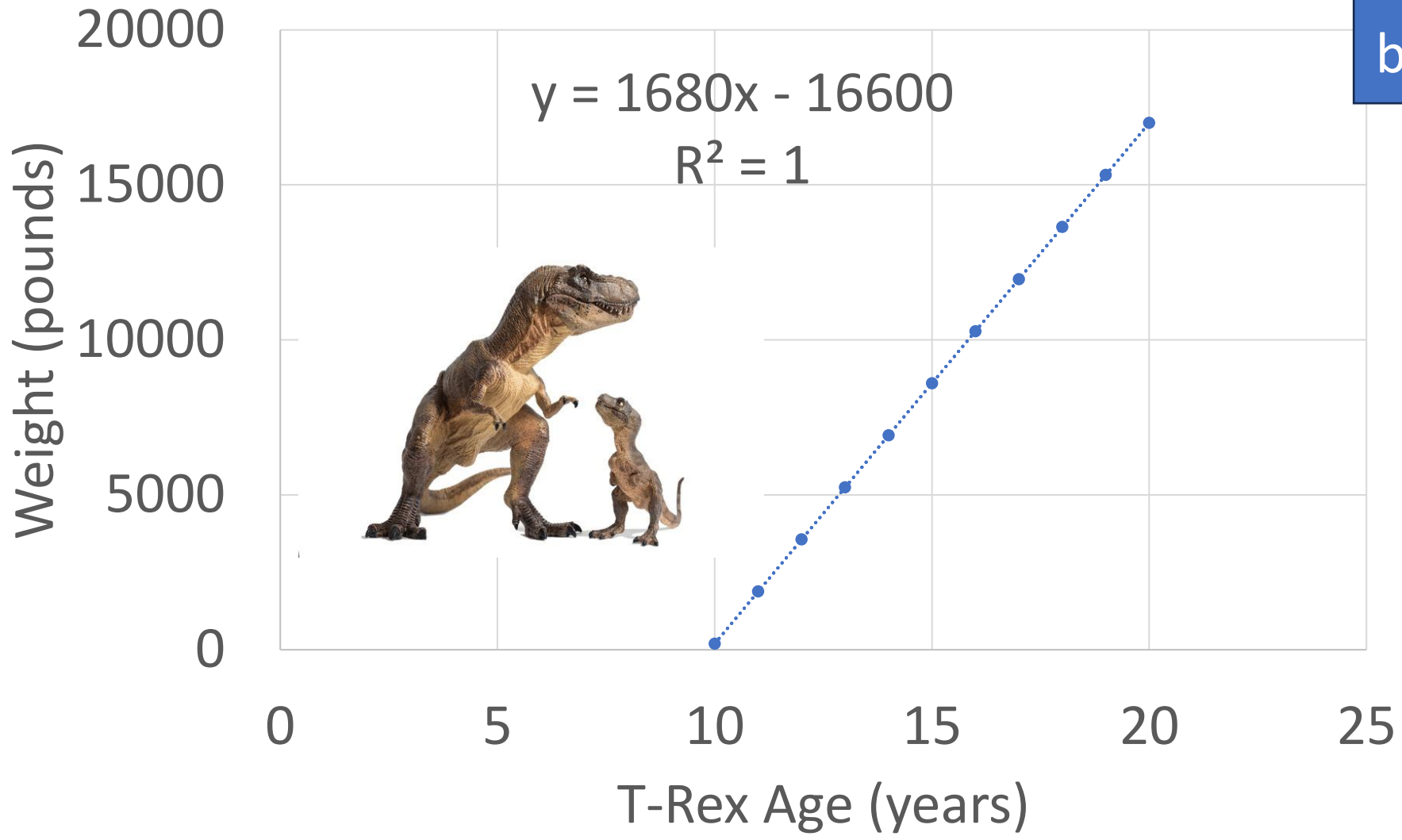


This graph shows the mass of a T-Rex throughout its life. Rapid growth happens between 10 and 20.

# T-Rex Growth Between Ages 10 and 20

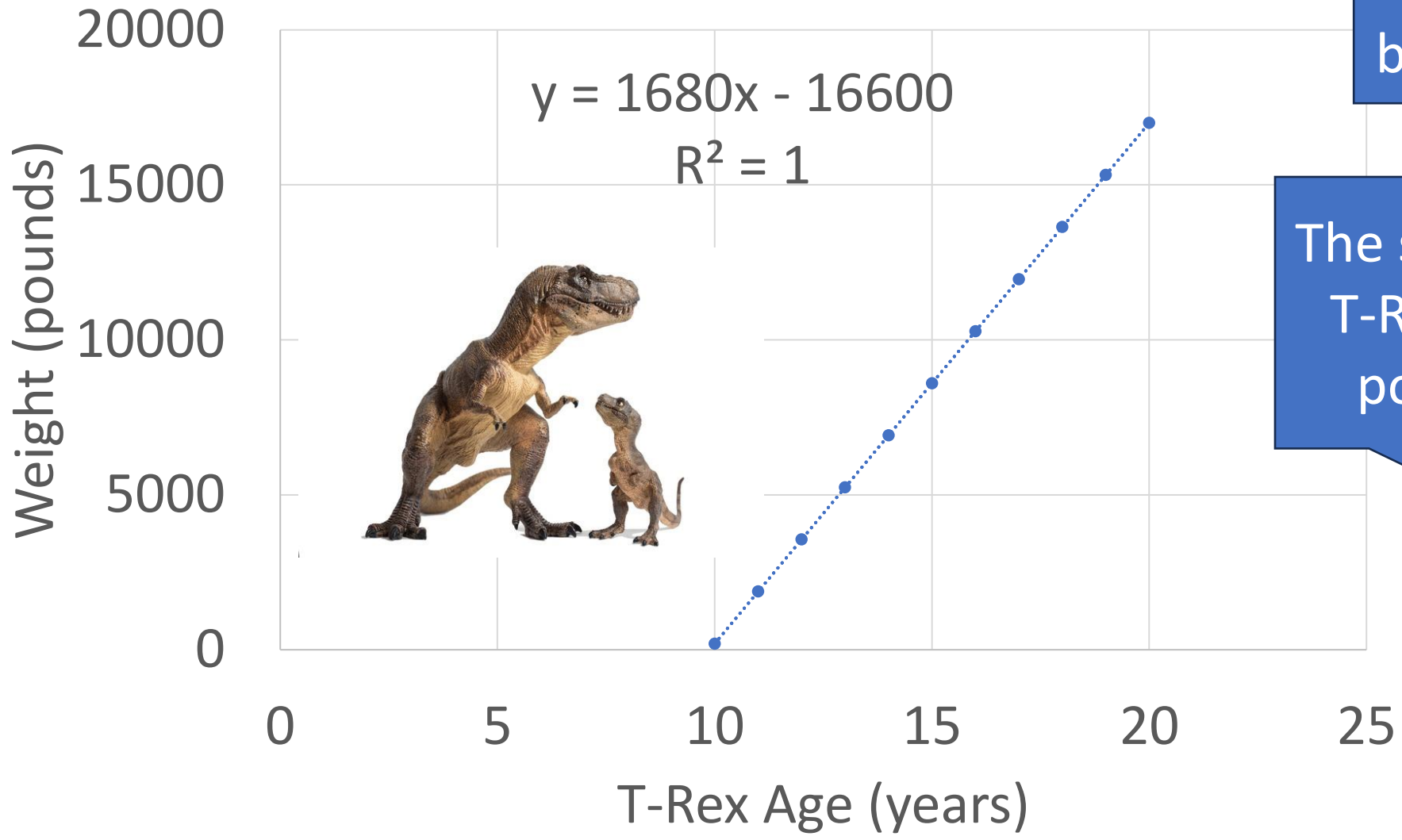


# T-Rex Growth Between Ages 10 and 20



This graph zooms in on the growth between ages 10-20.

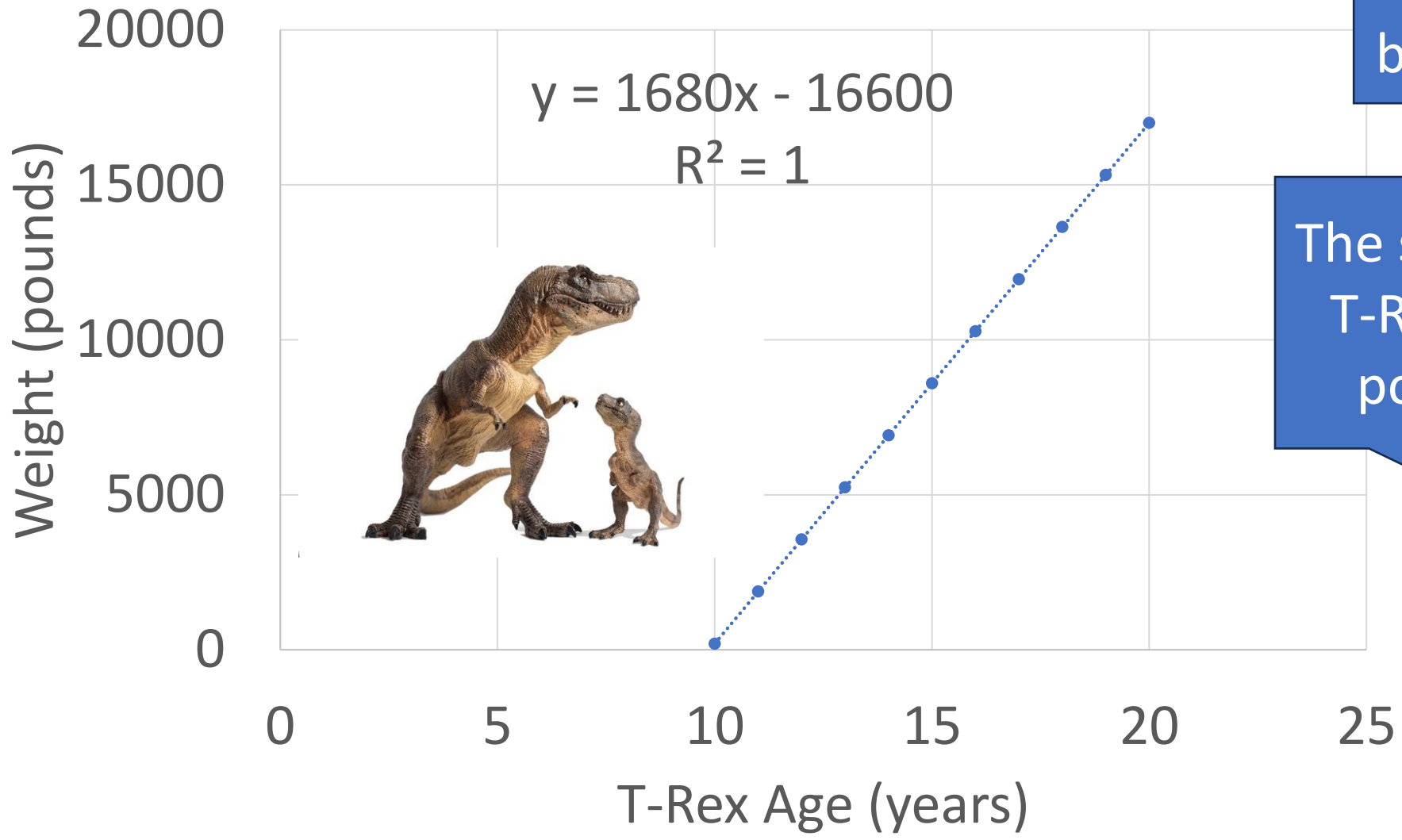
# T-Rex Growth Between Ages 10 and 20



This graph zooms in on the growth between ages 10-20.

The slope tells us that T-Rex gained 1,680 pounds per year.

# T-Rex Growth Between Ages 10 and 20



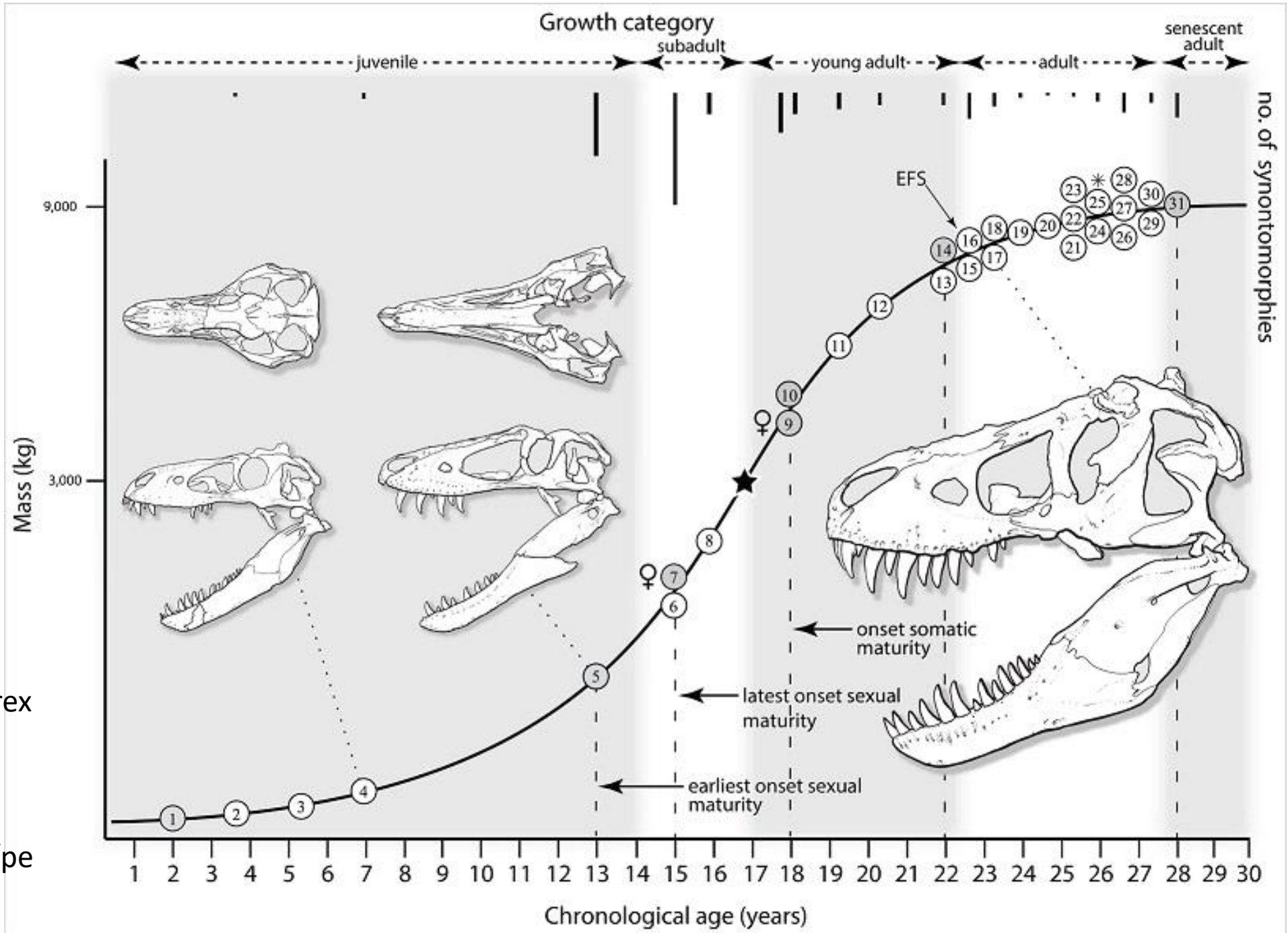
This graph zooms in on the growth between ages 10-20.

The slope tells us that T-Rex gained 1,680 pounds per year.

That works out to about 5 pounds per day.

This growth has been verified for all 31 T-Rex skeletons.

Source: Carr TD. 2020. A high-resolution growth series of Tyrannosaurus rex obtained from multiple lines of evidence. PeerJ 8:e9192  
<https://doi.org/10.7717/peerj.9192>





# Research Question #1

To allow it to grow so large, did a T-Rex  
live longer than humans?



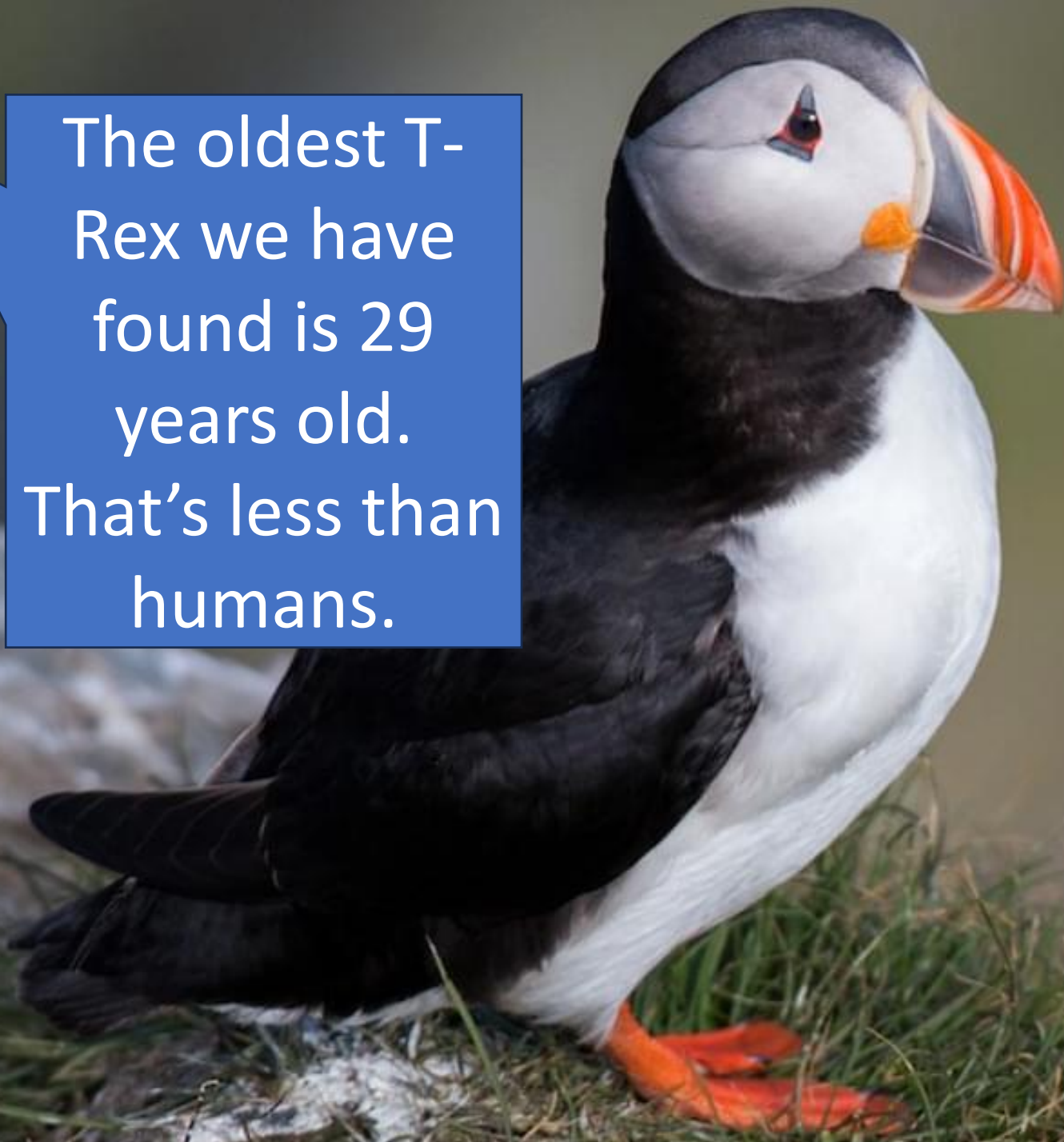
# Research Question #1


To allow it to grow so large, did a T-Rex live longer than humans?

In fact, the T-Rex put on 10,000 pounds in about 10 years. It grew very fast.



The oldest T-Rex we have found is 29 years old. That's less than humans.



A photograph of a puffin standing on a patch of green grass. The puffin has a black cap, a white face, and a large, colorful beak with orange, red, and grey stripes. It is facing right. Three blue text boxes with white text are overlaid on the image. The first box is on the left, the second is on the right, and the third is at the bottom right.

The oldest T-Rex we have found is 29 years old. That's less than humans.

It's about as long as one of its descendants, the Puffin.

Many larger seabirds are long lived compared to other birds