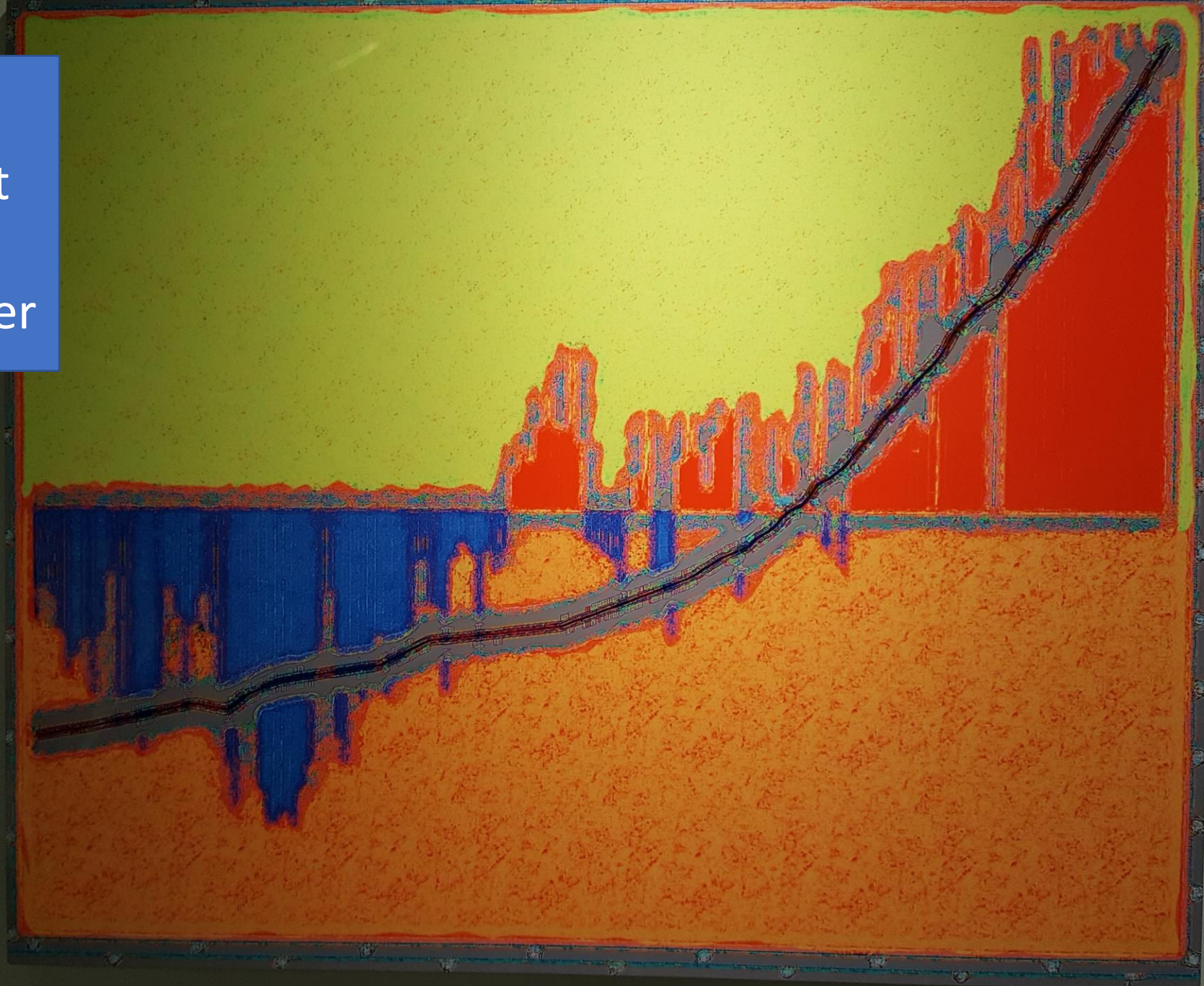
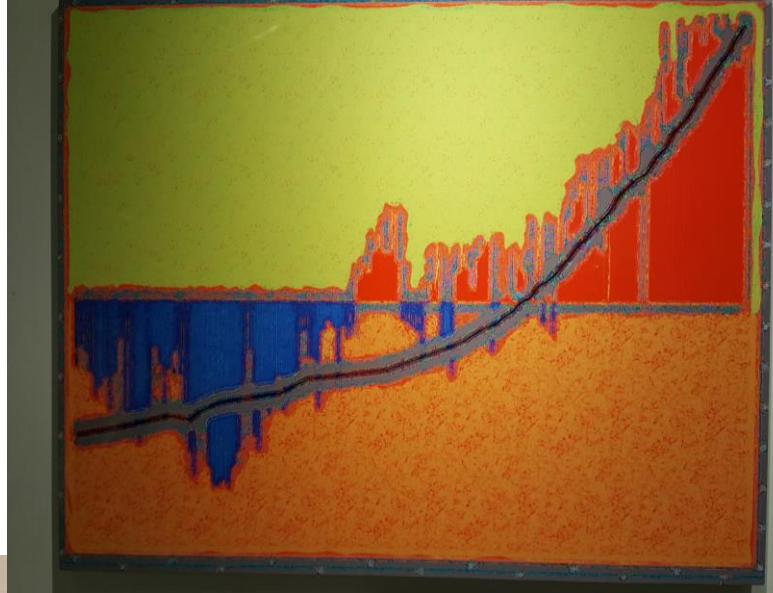


Data Project Ideas

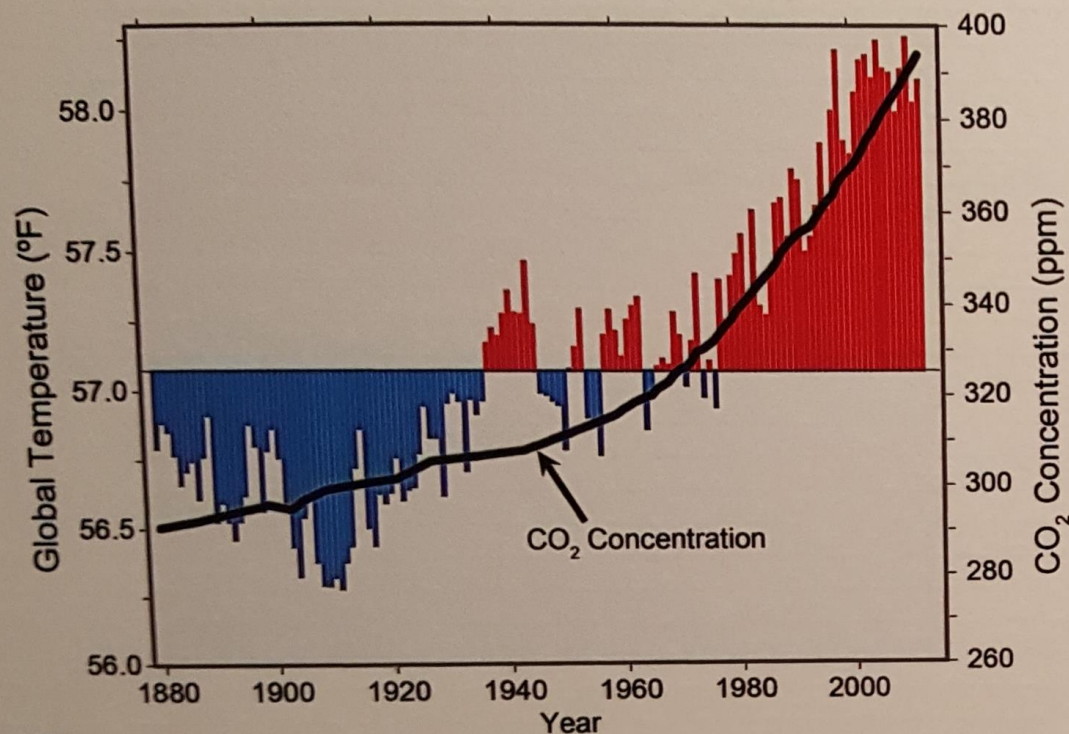
If you are using found graphs,
how can you get a 4+?

A series of
pieces of art
from the
Science Center





Global Temperature and Carbon Dioxide



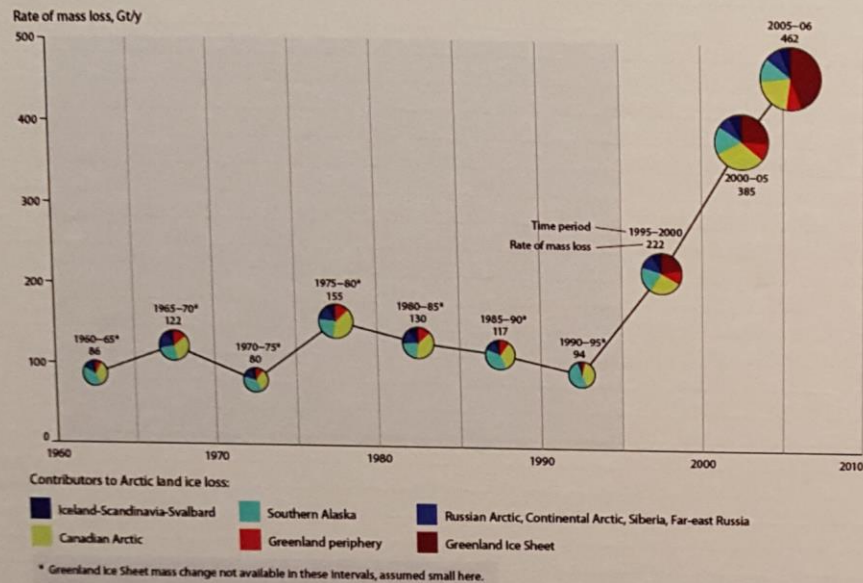
Earth's average **temperature** is **higher** now than it was in 1880.

This rise in temperature is **linked** to a rise in atmospheric **CO₂**.

La **température** moyenne de la Terre est **plus élevée** qu'en 1880.

Cette hausse est **reliée** à la hausse du **CO₂** atmosphérique.



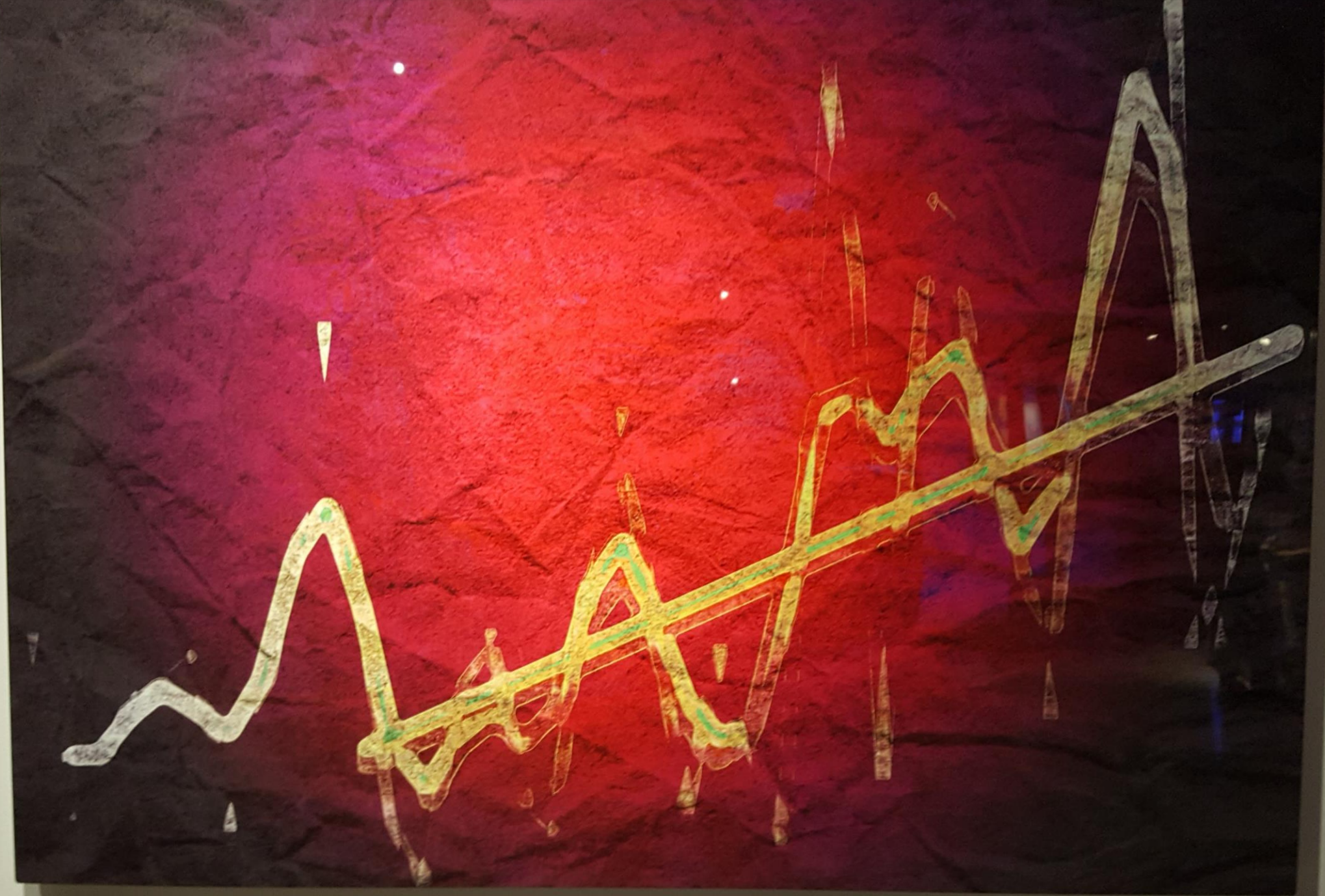


Melting of Arctic glaciers, ice caps and the Greenland Ice Sheet has greatly increased.

This addition of fresh water into the **oceans** is contributing to **rising sea levels**.

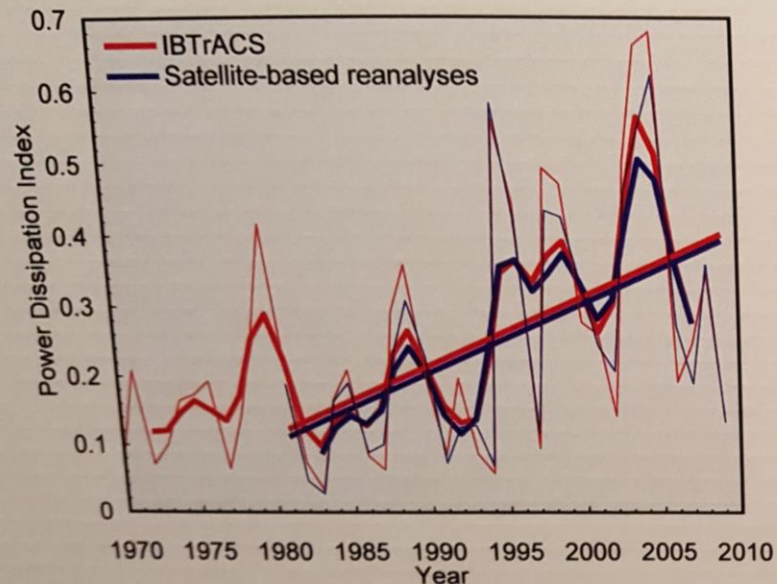
La nappe glaciaire du Groenland, les calottes glaciaires et les **glaciers** de l'Arctique **fondent** beaucoup plus.

Ainsi, de l'eau douce se déverse dans les **océans** et contribue à la **montée** du niveau de la mer.





North Atlantic Ocean

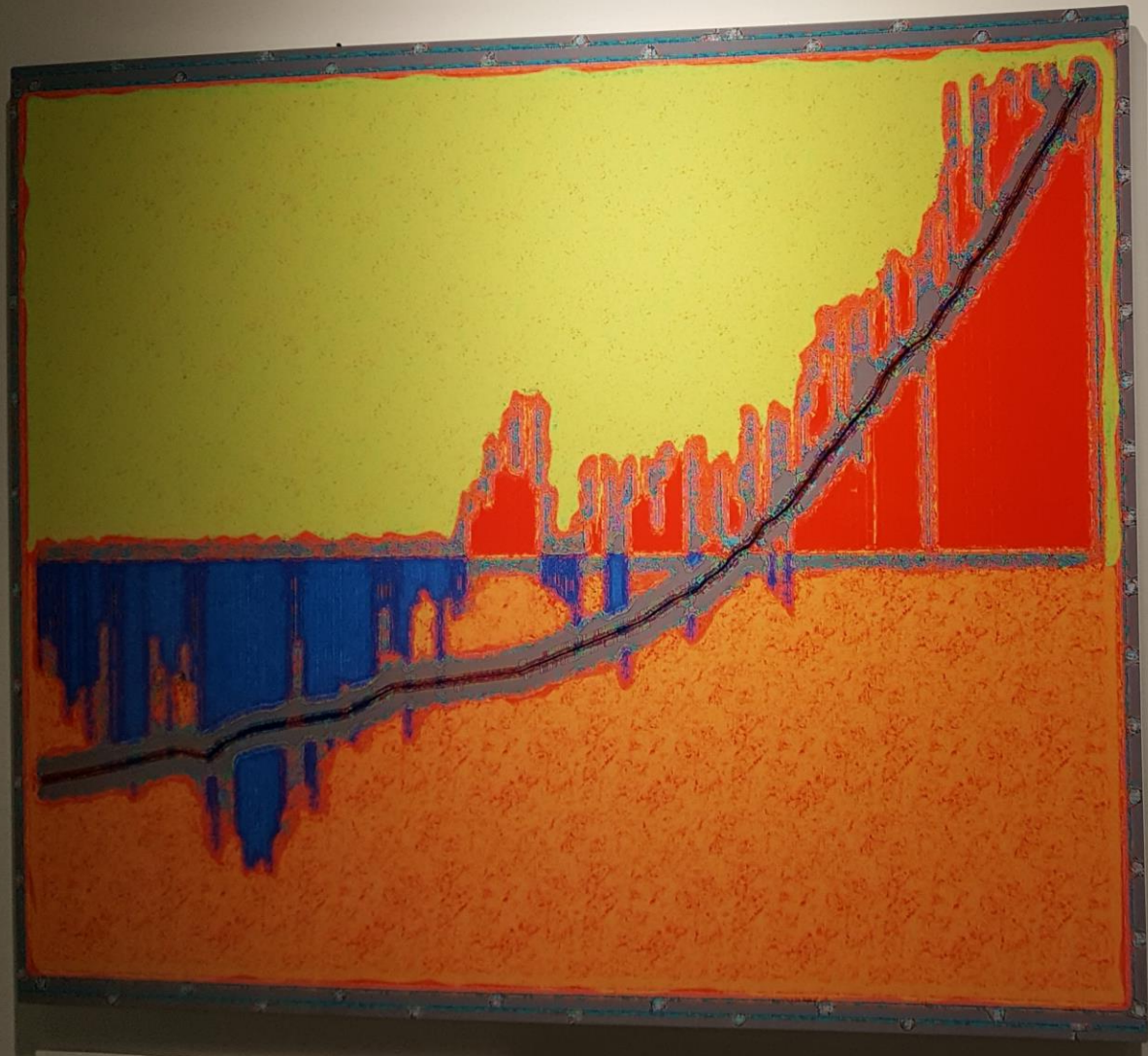


Hurricane power is a combination of intensity, frequency and duration.

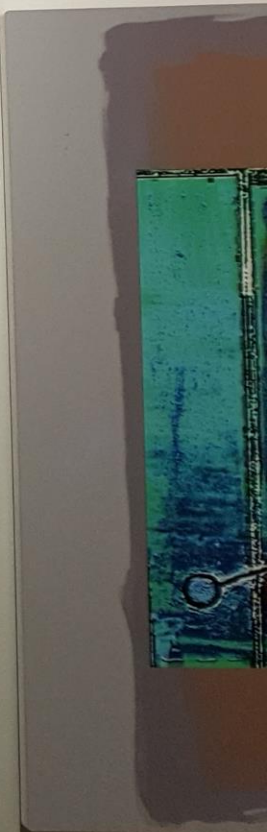
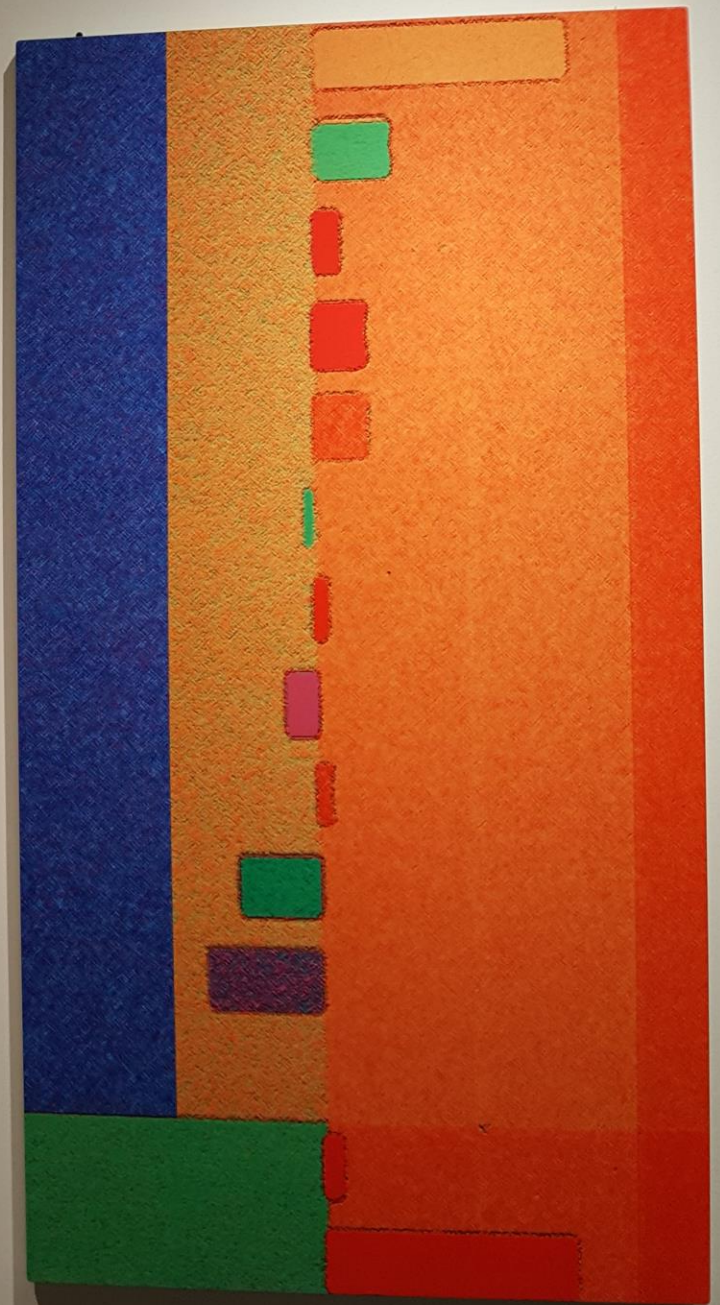
Since the 1980s, there is a strong **upswing** in the power of major hurricanes in the **North Atlantic Ocean**.

L'énergie des ouragans, c'est leur intensité, leur fréquence et leur durée prises ensemble.

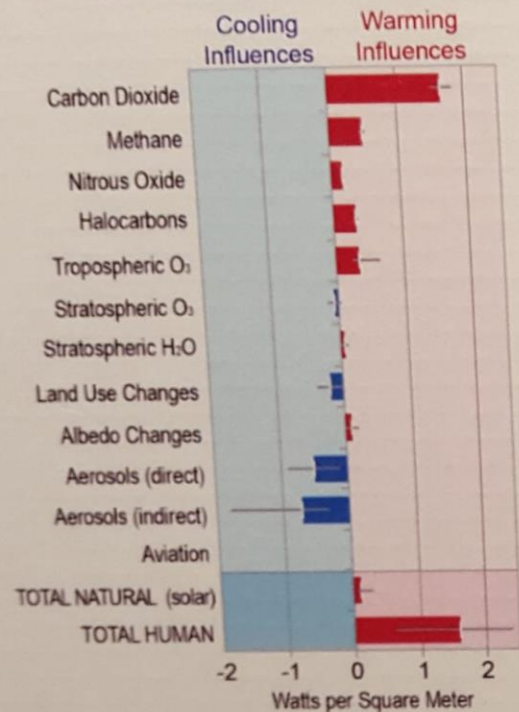
Depuis les années 80, l'énergie des grands ouragans suit une forte tendance à la **hausse** dans l'**océan Atlantique Nord**.



Global Temperature and Carbon Dioxide



Relative Strengths of Warming and Cooling Influences



Natural and human factors cool and **warm** the **Earth**.

The end result is a warming Earth, largely **due** to **human** actions.

Des facteurs naturels et humains refroidissent ou **réchauffent** la **Terre**.

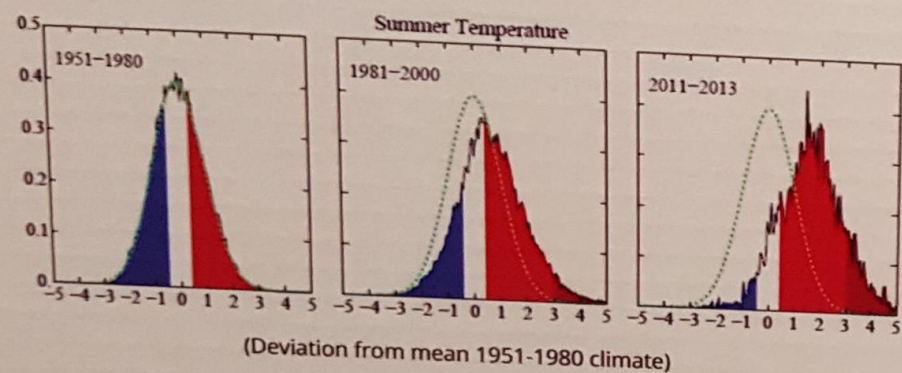
Au final, la Terre se réchauffe, surtout à **cause** des actions **humaines**.







More Extreme Heat Days

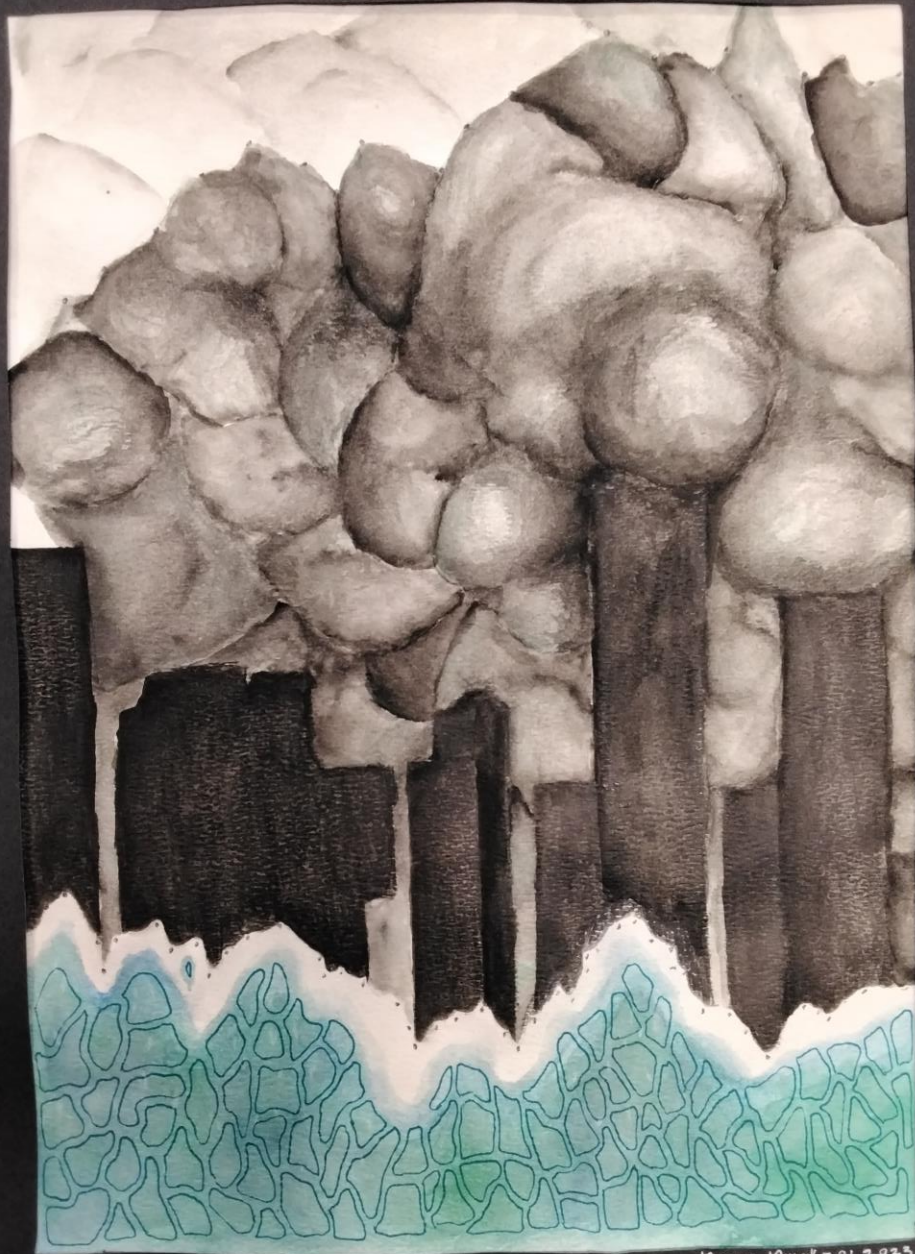


Mean **summer** temperatures have **shifted** to a much warmer range in the last 30 years.

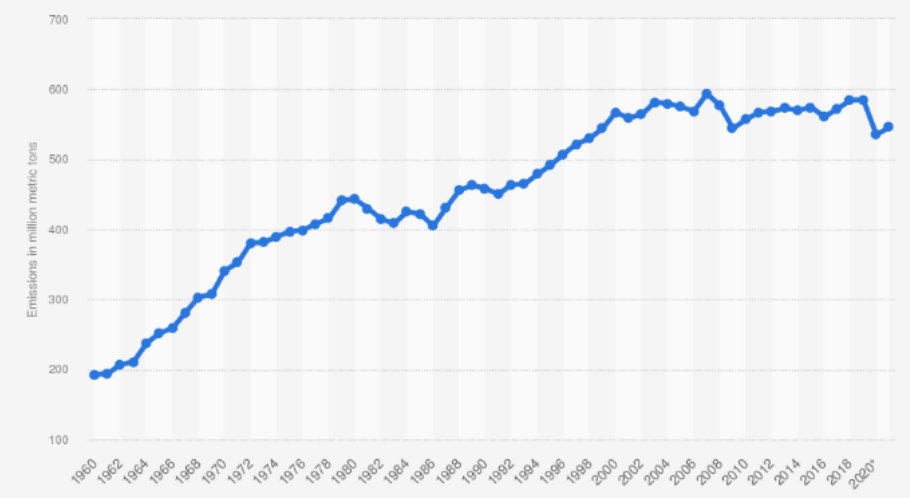
There is also an increasing trend towards **extremely hot** summer days.

L'été, les températures moyennes passent à une **échelle bien plus chaude** depuis 30 ans.

Les jours de **canicule** ont aussi tendance à augmenter.



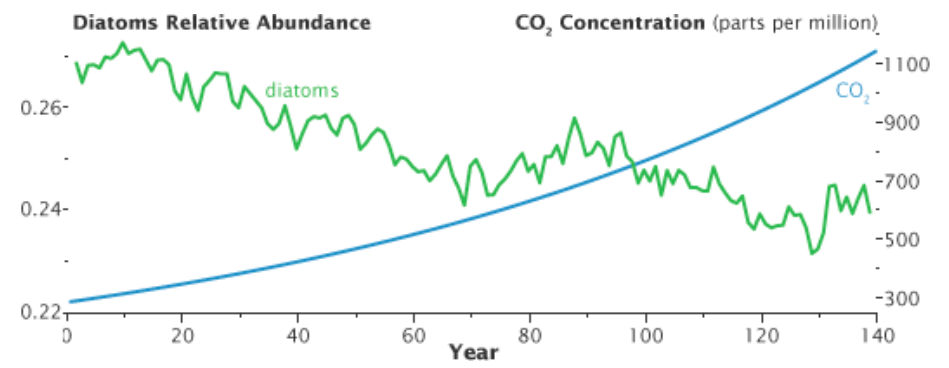
Territorial carbon dioxide (CO) emissions from fossil fuel combustion and industrial processes in Canada from 1960 to 2021 (in million metric tons)



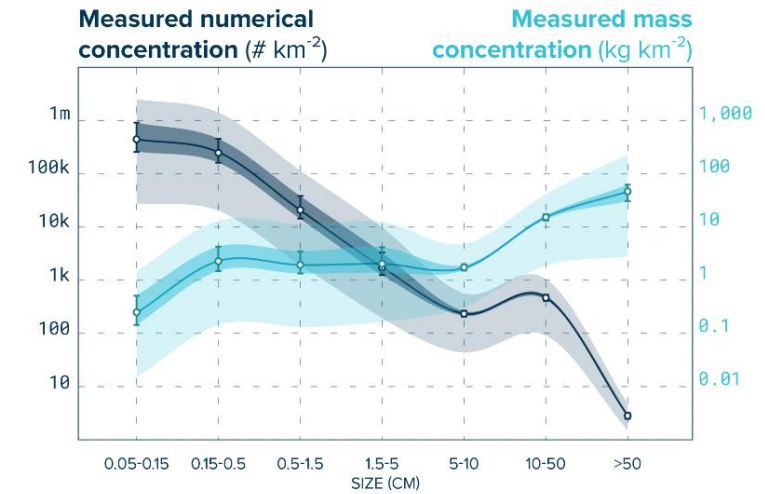
Sources
 Global Carbon Project; Expert(s) (Friedlingstein et al. (2022), Andrew and Peters (2022).)
 © Statista 2023

Additional Information:
 Canada; Global Carbon Project; Expert(s) (Friedlingstein et al. (2022), Andrew and Peters (2022).)

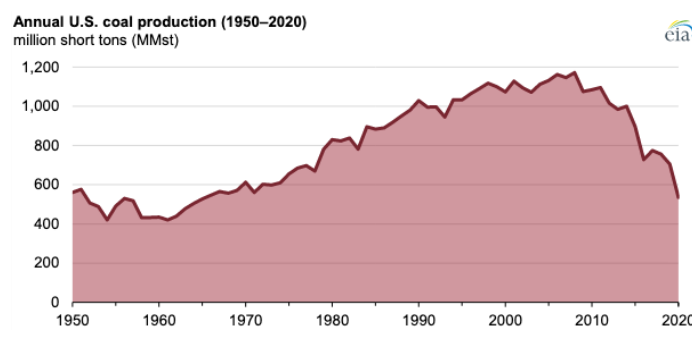
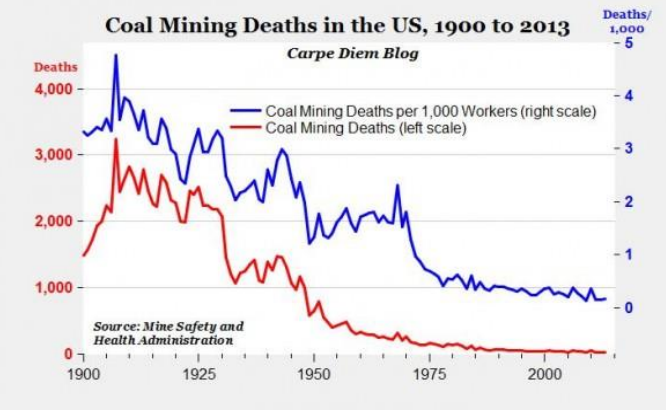
Acid Rain in Ontario

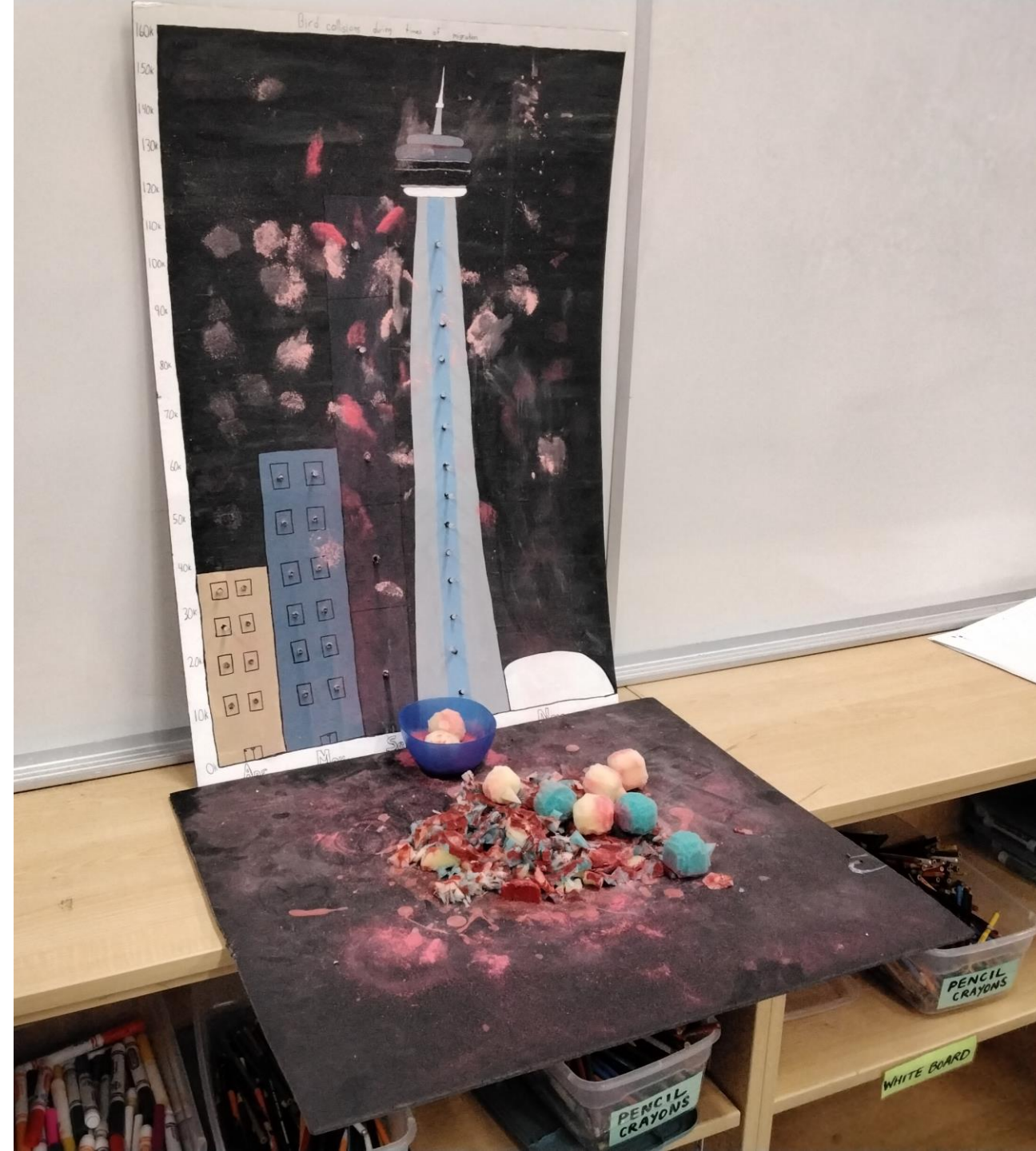


Great Pacific Garbage Patch



Coal Extraction in the US





Jill
Pelto

<https://www.jillpelto.com/>



Information is Beautiful

<https://informationisbeautiful.net/>



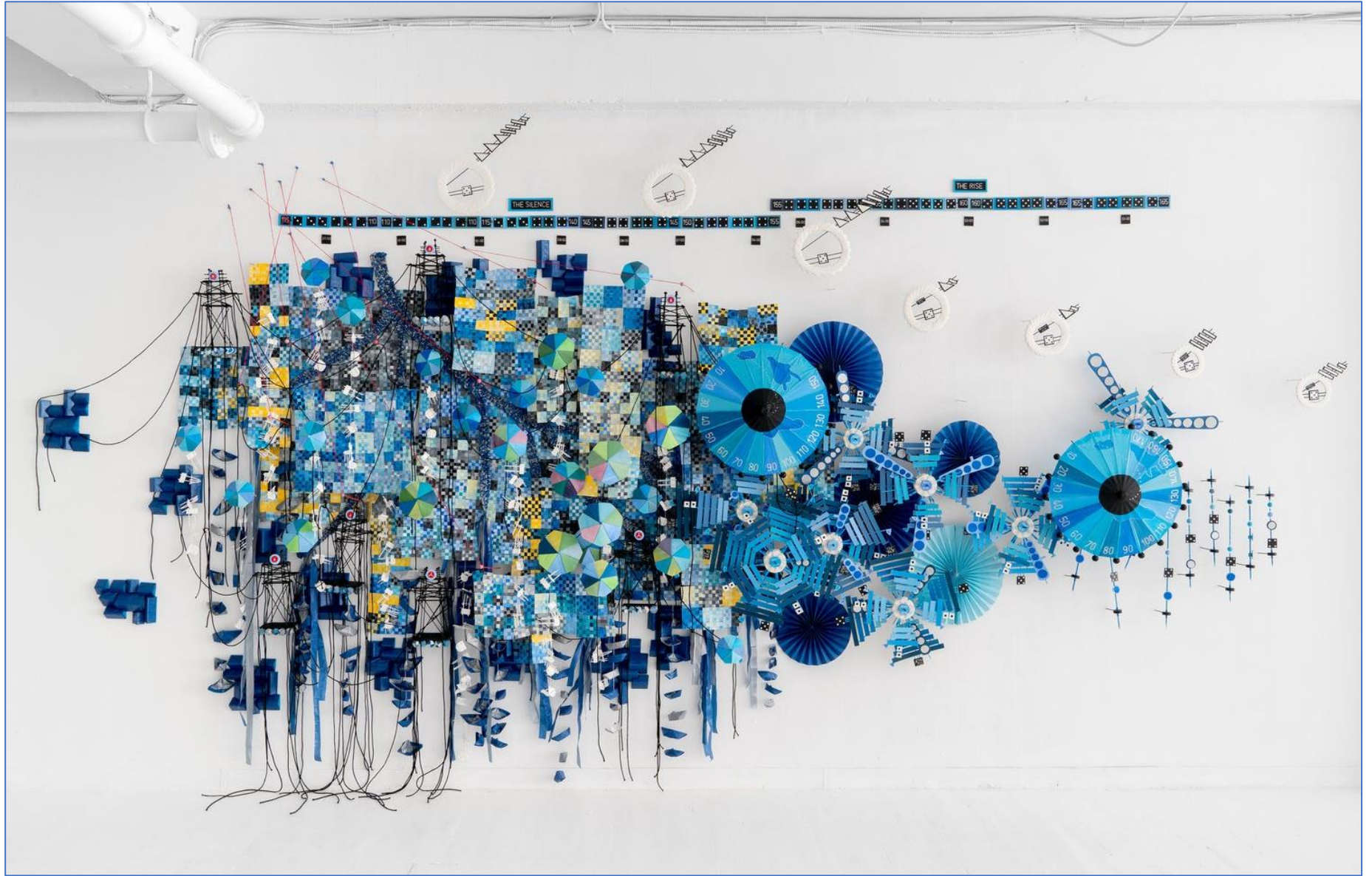
Ellie Irons

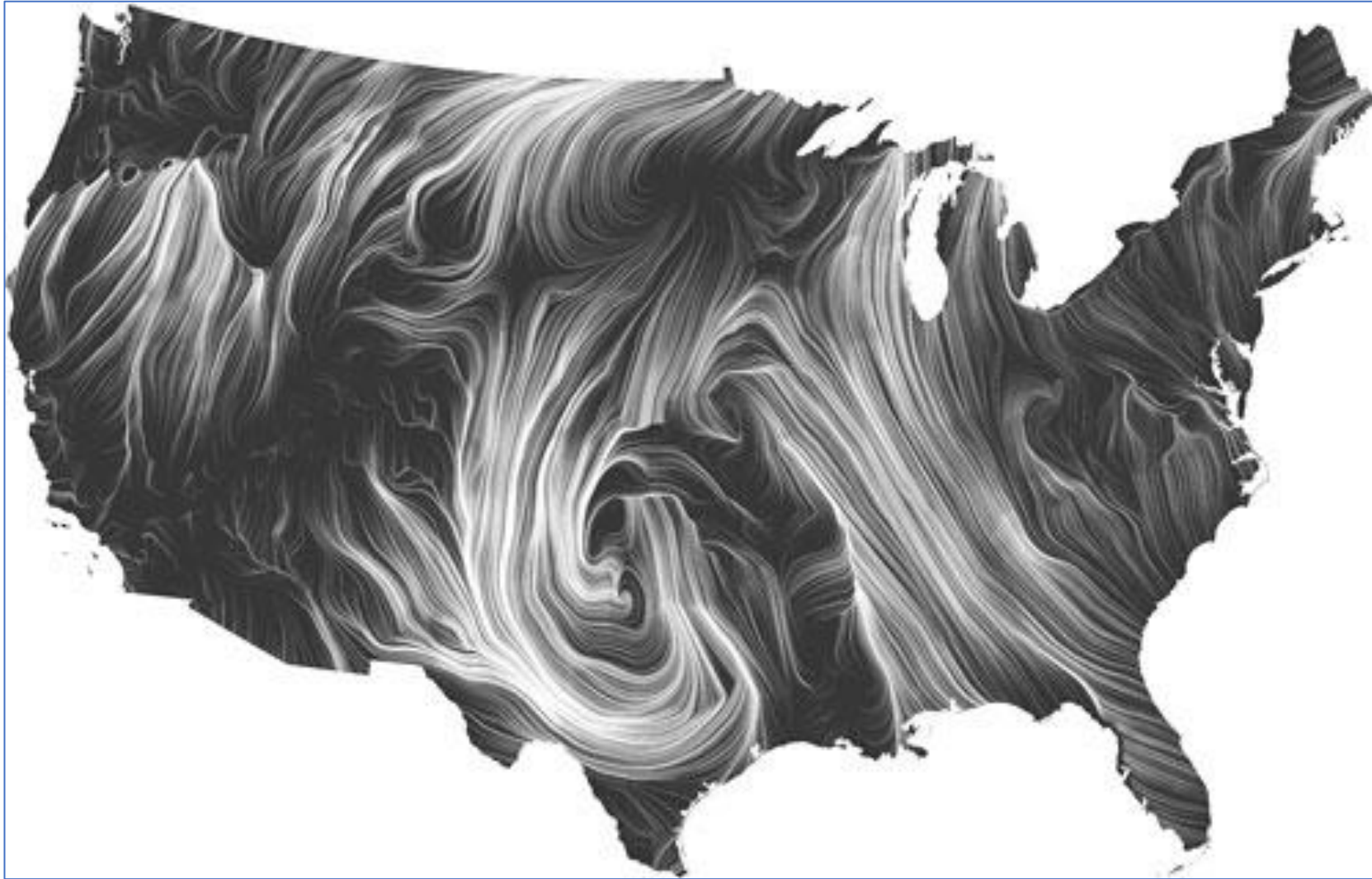
<https://ellieirons.com/>



Nathalie Miebach

<https://www.nathaliemiebach.com/>





Wind Map
Fernanda
Viegas
Martin
Wattenberg
<http://hint.fm/>