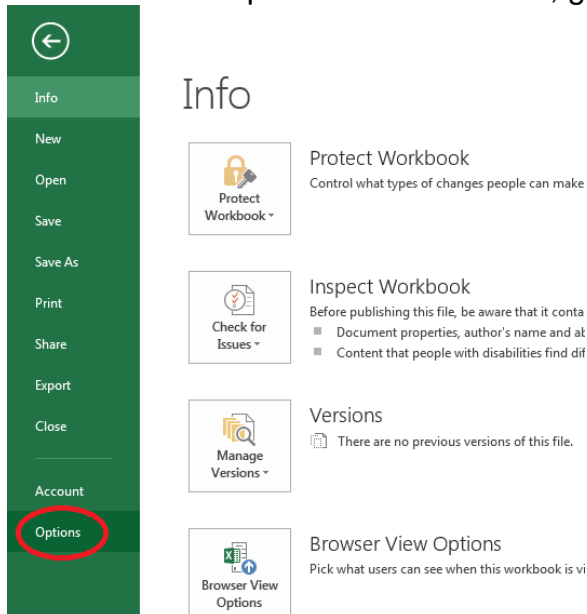
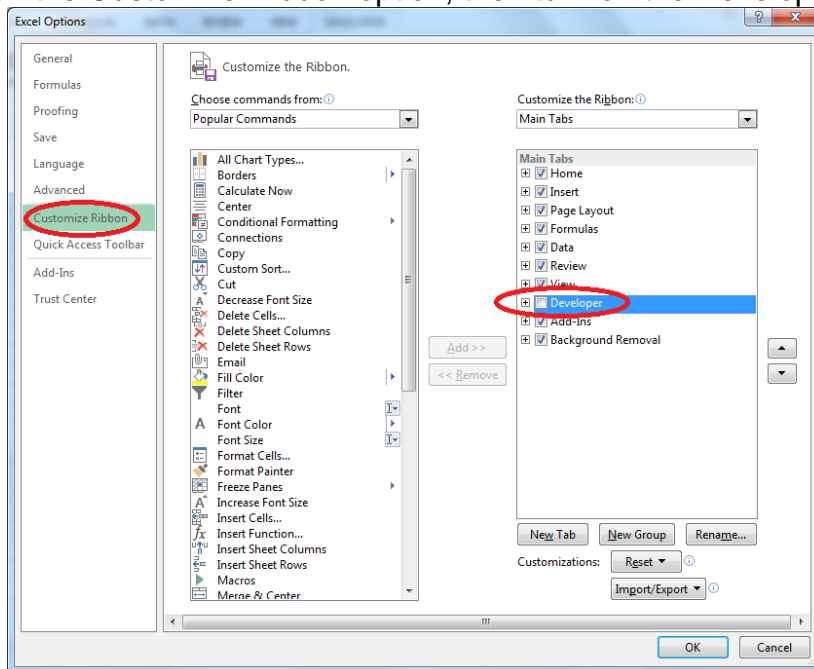


# Circles R Us 2.0 – With a Form

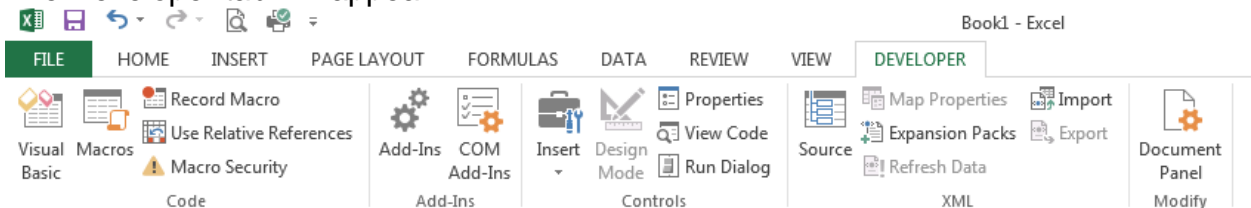
1. Open your Circles R Us spreadsheet – these directions will only work for 2013 so be careful about the version.
2. First, turn on the developer ribbon. To do this, go to the File Menu and pick Options.



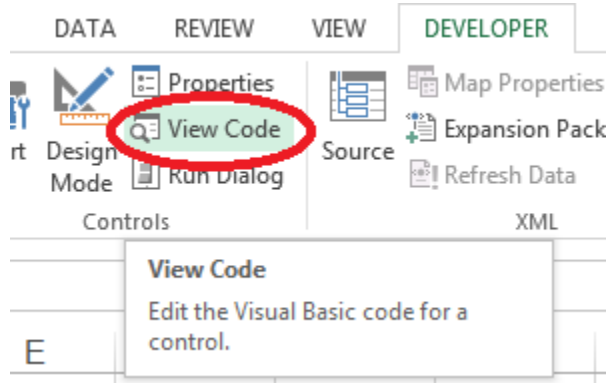
3. Click on the Customize Ribbon option, then turn on the Developer tab (it is currently off).



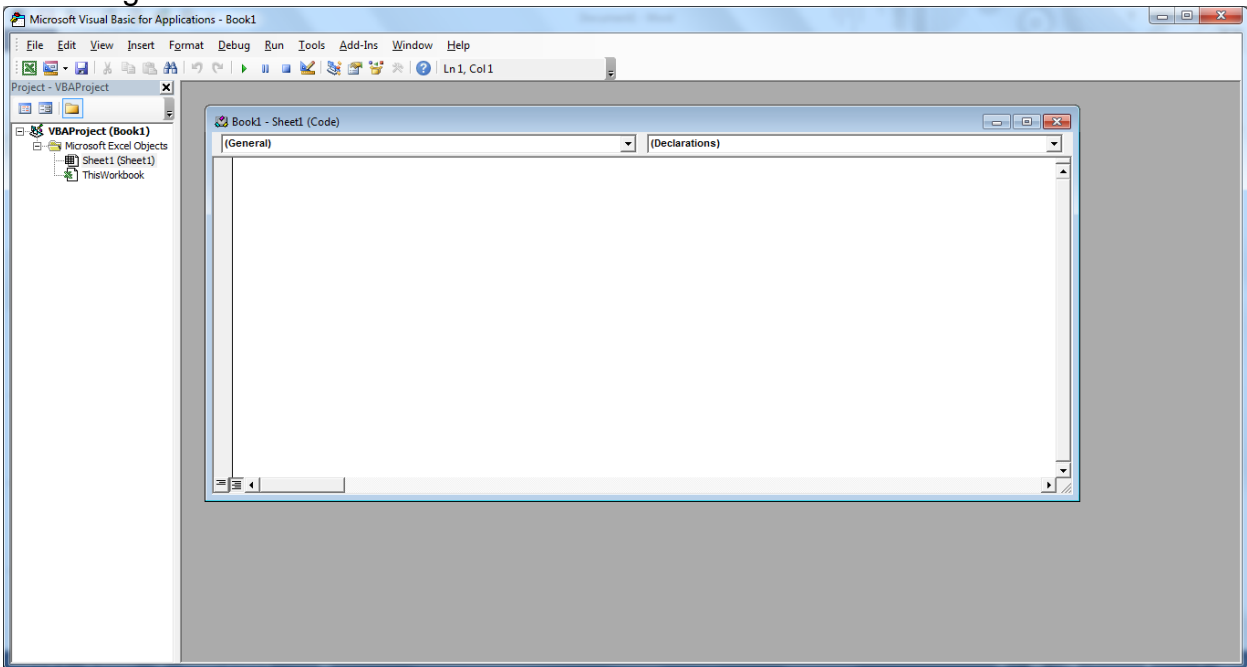
4. The Developer tab will appear:



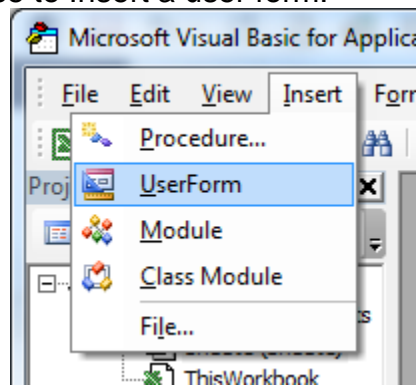
5. Click on View Code:



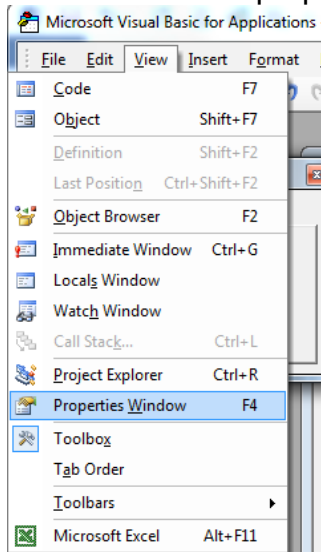
6. You will get the Visual Basic Editor:



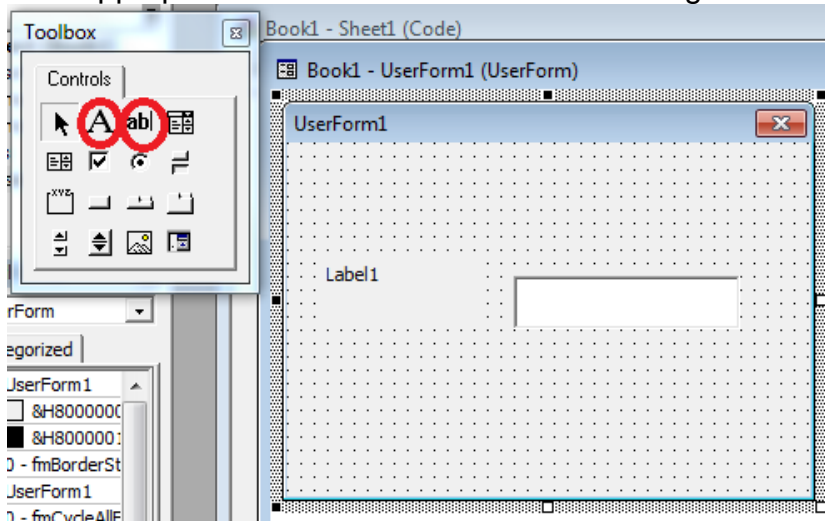
7. Choose to Insert a user form:



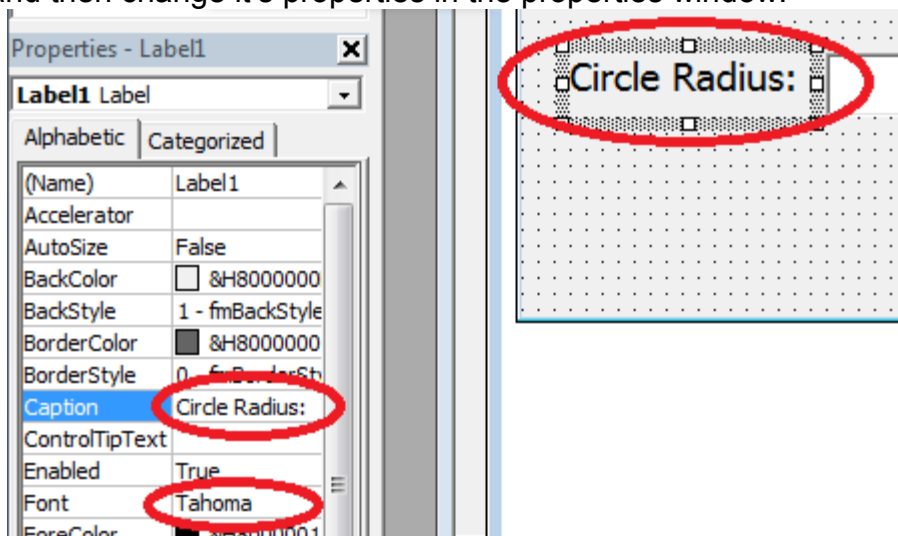
8. Also choose to view the properties window. View → Properties Window



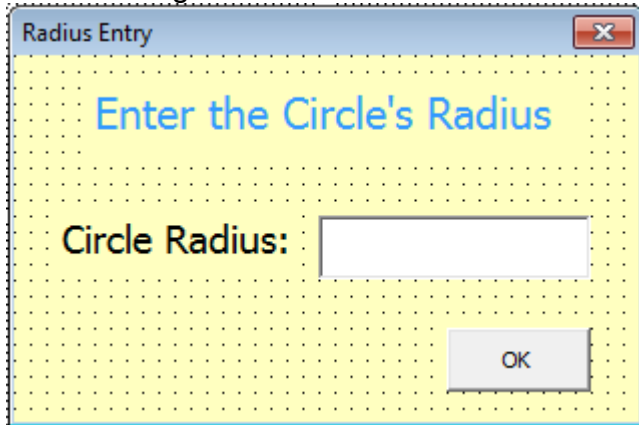
9. On the user form, add a TextBox (ab| button) and a Label (A button). You will need to click on the appropriate control on the Toolbox and drag it on the form.



10. To change the value of the Label from Label1 to something nicer, you need to select the label and then change its properties in the properties window.

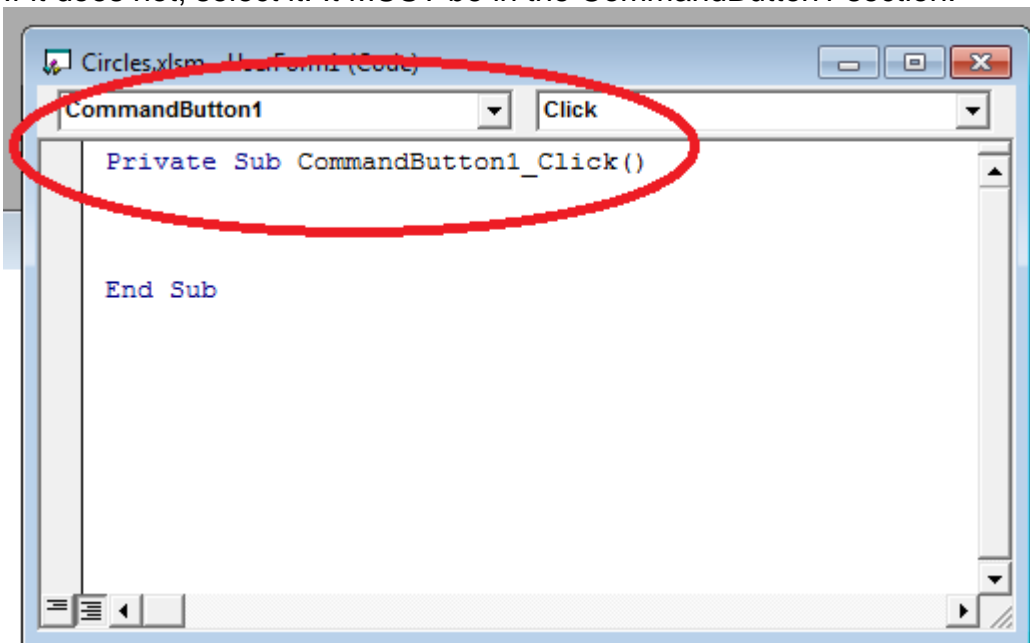


11. Finish making the form:



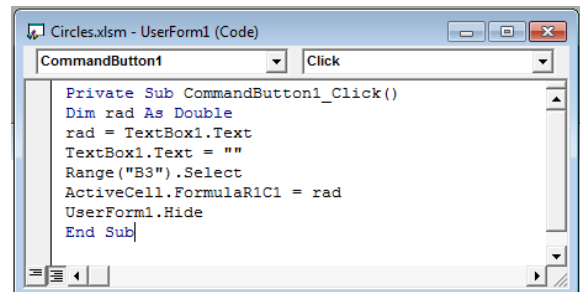
- Make sure the title bar changes to "Radius Entry"
- Make a title, "Enter the Circle's Radius" and change the colour of the Font.
- Add an "OK" button, it is a command button.
- Change the background colour of the title, label and form.
- Resize the form nicely.

12. If you double click on the OK button, this appears. Make sure it says CommandButton1. If it does not, select it. It MUST be in the CommandButton1 section.

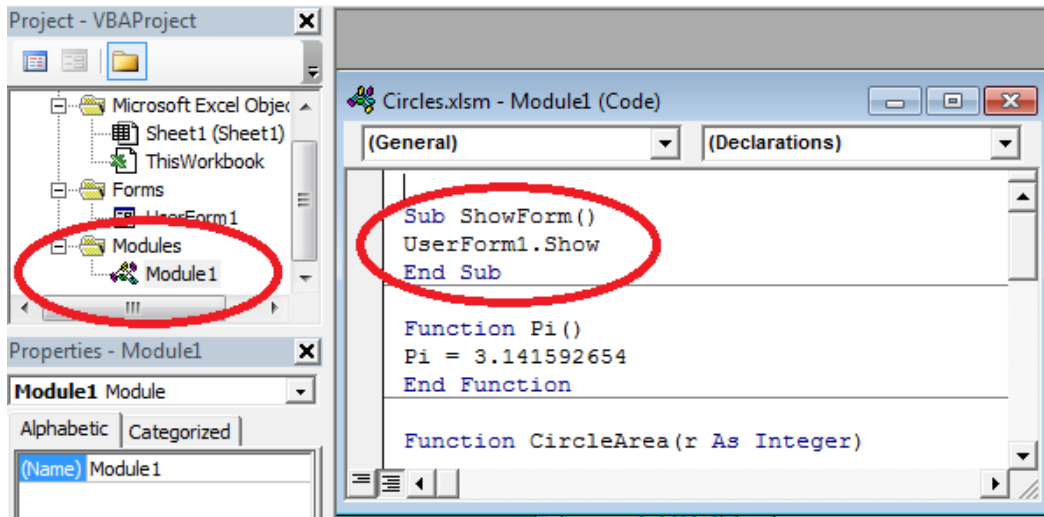


13. Add in this code:

```
Private Sub CommandButton1_Click()  
Dim rad As Double  
rad = TextBox1.Text  
TextBox1.Text = ""  
Range("B3").Select  
ActiveCell.FormulaR1C1 = rad  
UserForm1.Hide  
End Sub
```

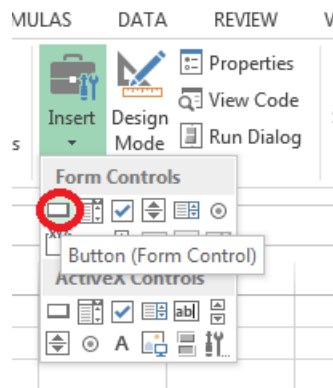


14. Add in the showForm sub to the other functions that you wrote previously. They will be located under module1.

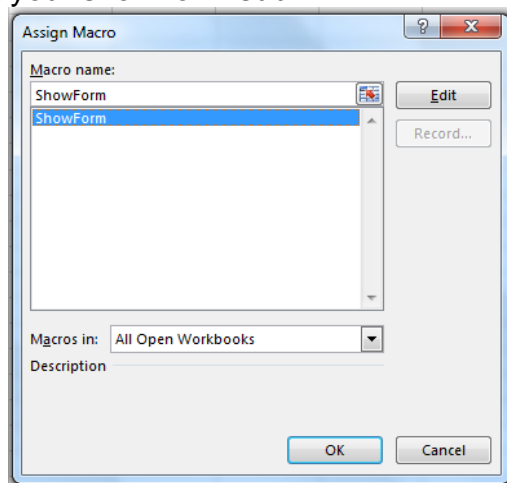


```
Sub ShowForm()  
UserForm1.Show  
End Sub
```

15. Go back to the spreadsheet. Add a button using the Developer Tab, Insert, Button.



16. Click on the form and create a button of the correct size, the following dialog will appear. Select your show form sub:



17. Rename your button on the screen.

	A	B	C	D	E
1	<b>Circles R Us</b>				
2					
3	<b>Radius:</b>	7			
4					
5	<b>2 Dimensions</b>				
6	Diameter	14			
7	Circumference	43.9823			
8	Area	153.938			
9					
10	<b>3 Dimensions</b>				
11	Surface Area	615.7522			
12	Volume	1436.755			

18. Test your program. When you click on the button, your dialog box should appear, enter the number into the cell and the formulas should adjust.

	A	B	C	D	E	F	G
1	<b>Circles R Us</b>						
2							
3	<b>Radius:</b>	8					
4							
5	<b>2 Dimensions</b>						
6	Diameter	16					
7	Circumference	50.26548					
8	Area	201.0619					
9							
10	<b>3 Dimensions</b>						
11	Surface Area	804.2477					
12	Volume	2144.661					
13							
14							
15							
16							
17							

Change Radius

Enter the Circle's Radius

Circle Radius:

OK