

# Oscars

## Advanced Formatting

1. You will need these files:

To import records OscarEntryForm

Main Menu

Splash Screen

oscars.txt

entryform\_back.png

byActorName.bmp

curtain\_splash.jpg

byAge.bmp

byBirthPlace.bmp

newWinner.bmp

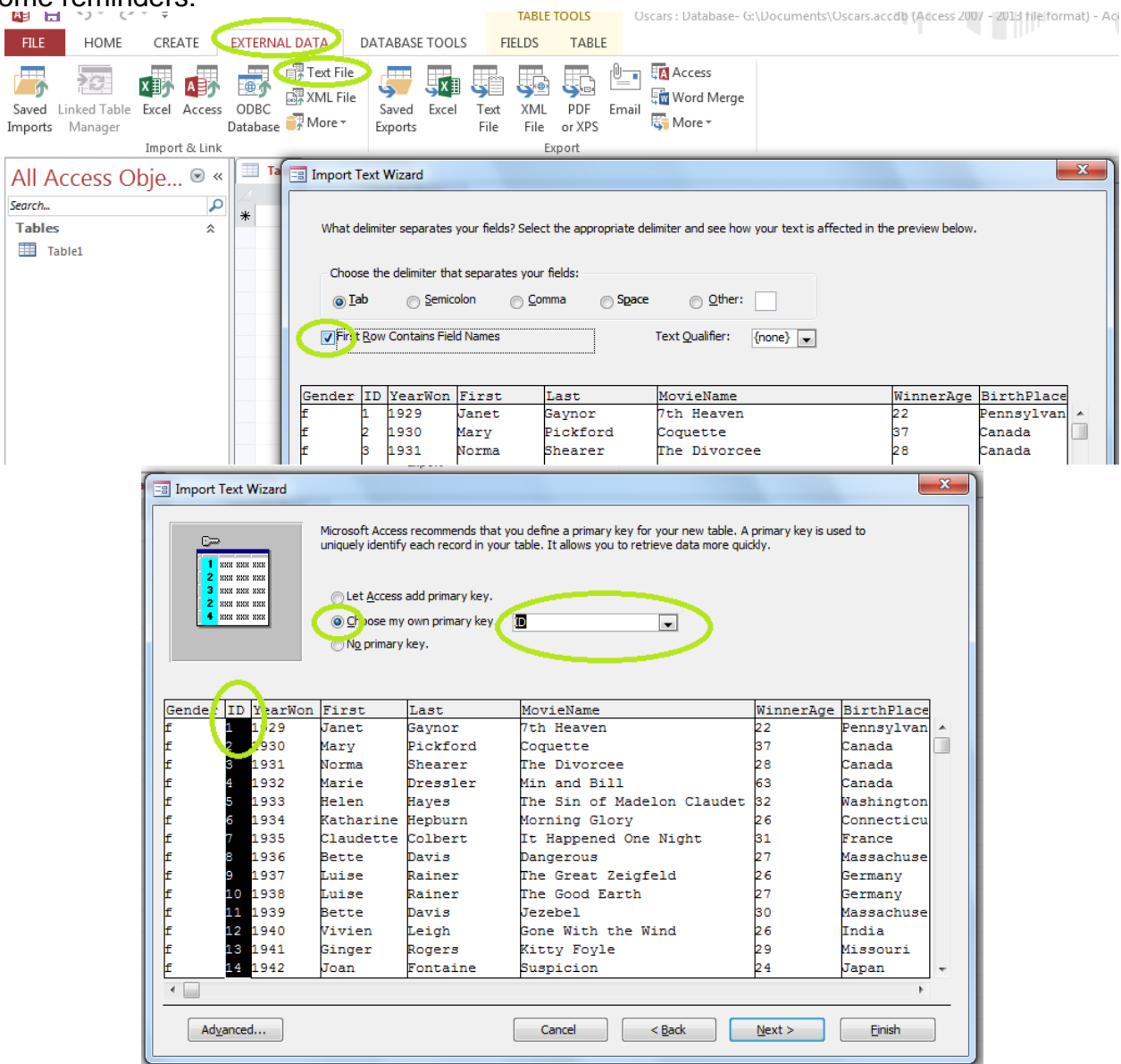
oscar.jpg

## A. Make database

2. Open a new database

3. Import the information from Oscars.txt (the instructions for this are in 2\_library)

4. Some reminders:



5. It gave me some error messages, but still imported flawlessly.

6. The table has 156 records.

## B. Queries

7. Make this query, save it as **QueryAgeGroups**:

```
SELECT ageofwinner, count(*) as count
FROM winner
GROUP BY ageofwinner
ORDER BY ageofwinner
```

Note this part: SELECT ageofwinner, count(\*) **as count**  
That renames the column so it isn't an ugly "Exp1000".

8. Make this query, save it as **QueryBirthPlace**

```
SELECT BirthPlace, count(*) AS [count]
FROM Oscars
GROUP BY BirthPlace
ORDER BY BirthPlace;
```

9. Make this query, save it as **QueryNameSearch**

```
SELECT First, Last, MovieName, YearWon
from Oscars
where First = [What is the first name of the actor? (OK if not known)] OR
Last = [What is the last name of the actor? (OK if not known)]
```

This Makes two dialog boxes to type in.

The user's answer makes up the query. These answers...

Two dialog boxes titled "Enter Parameter Value". The first dialog box contains the text "What is the first name of the actor? (OK if not known)" and a text input field with "Luise" entered. The second dialog box contains the text "What is the last name of the actor? (OK if not known)" and a text input field with "Rainer" entered. Both dialog boxes have "OK" and "Cancel" buttons.

Produce...

QueryNameSearch				
	First	Last	MovieName	YearWon
	Luise	Rainer	The Great Zeig	1937
	Luise	Rainer	The Good Earth	1938
*				

## C. Add Records Form

10. We are going to make this form, which will allow the user to enter new records.

Oscar Data Entry Form

Gender: f

ID: 1

YearWon: 1929

First: Janet

Last: Gaynor

MovieName: 7th Heaven

WinnerAge: 22

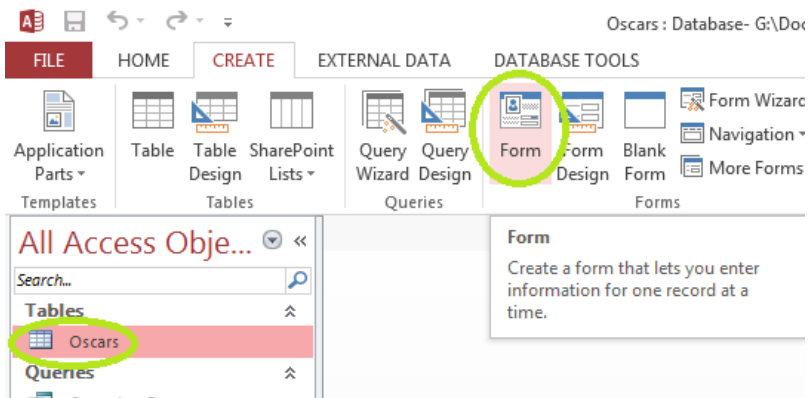
BirthPlace: Pennsylvania

BirthMonth: 10

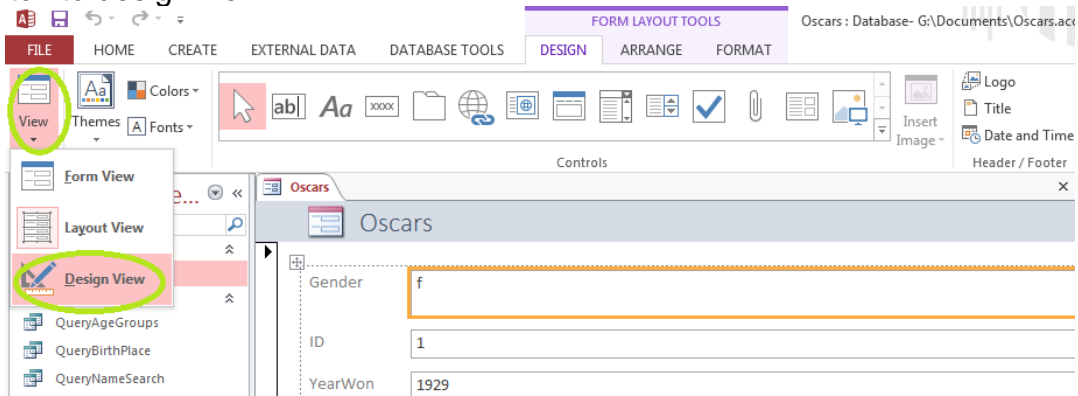
BirthDay: 6

BirthYear: 1906

11. Select the Oscars table and create a form.



12. Switch to design view.

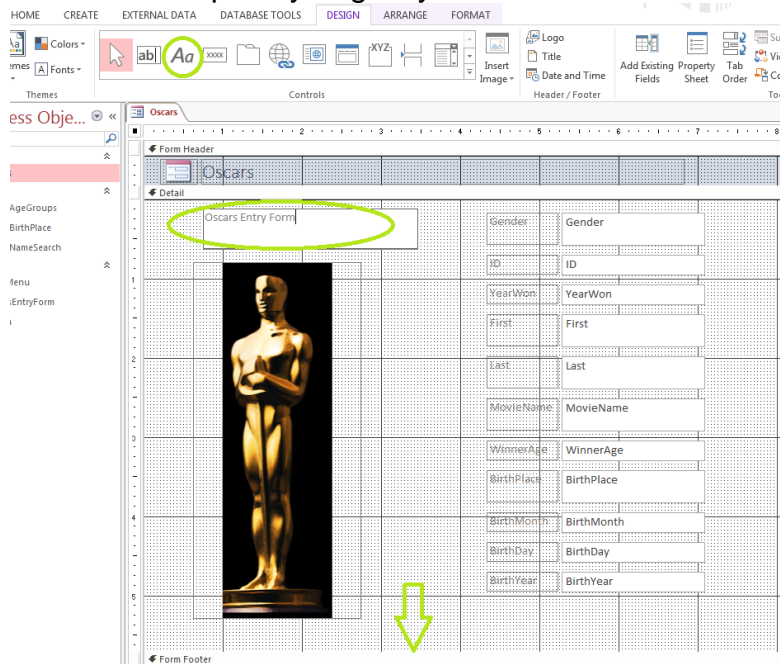


13. Highlight all of the fields, but not their labels in front. Then, drag all of the fields so that they are smaller.

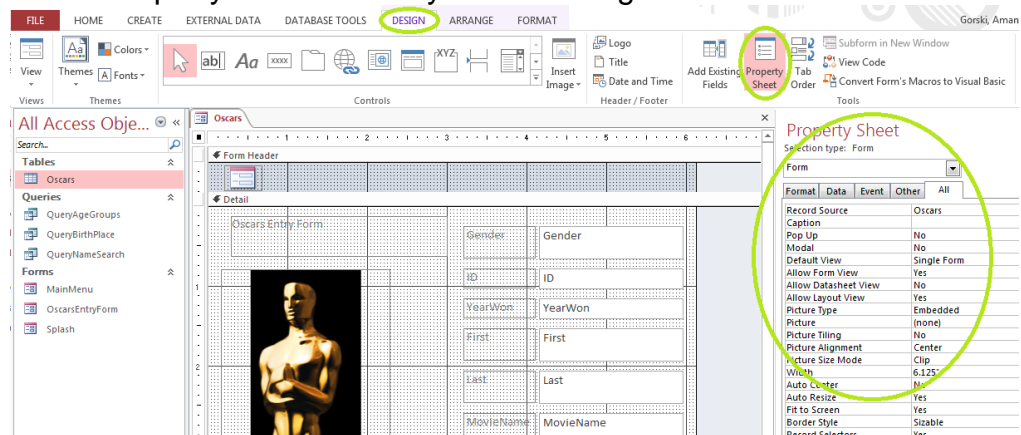
14. Highlight the fields and their labels. Move them all over to the right.

15. In the Design Menu, choose to insert image. Choose the entryForm\_Back.png. Drag on the screen to place it.

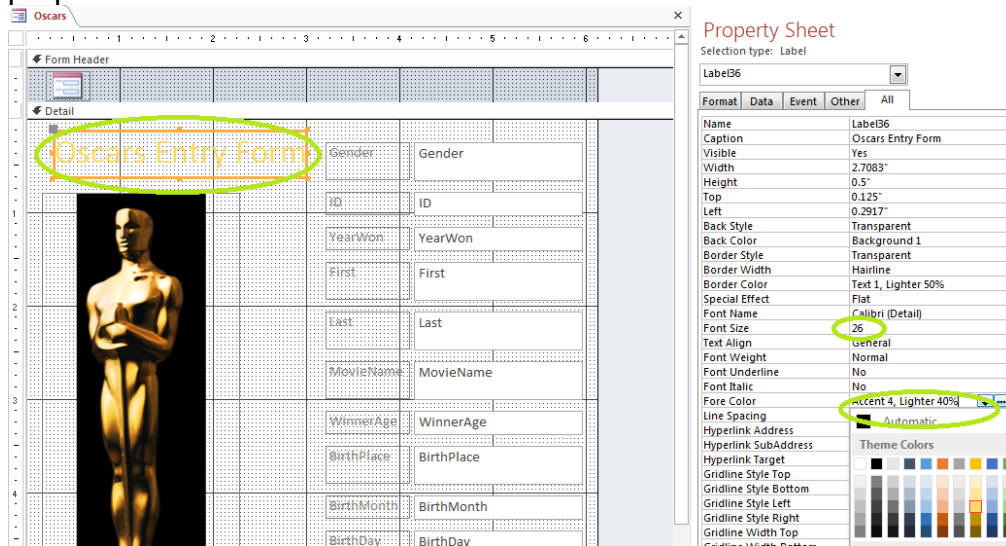
16. Resize the form space you give you move room. Add the title using a label.



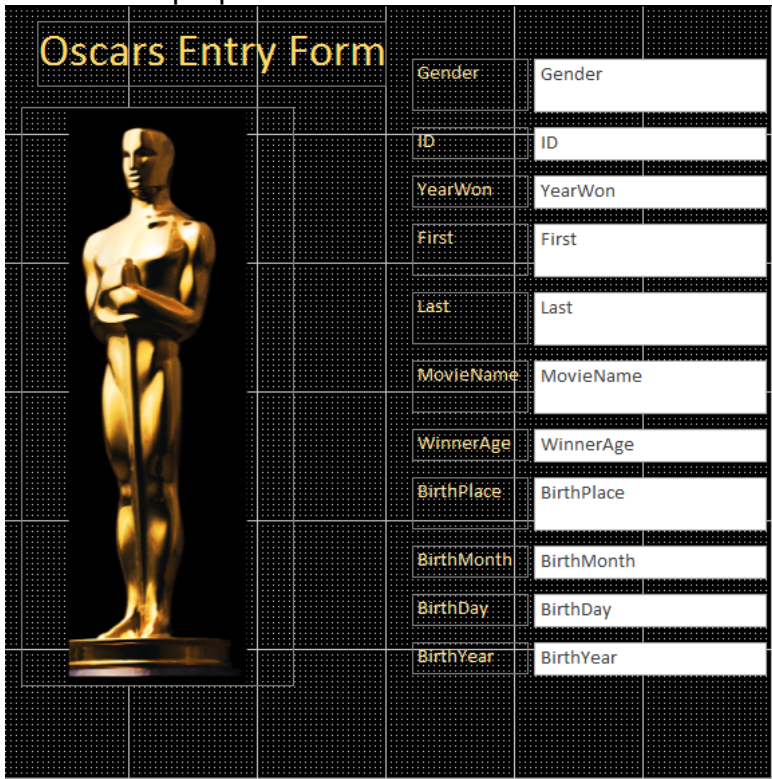
17. Show the Property sheet so that you can change the colours of various widgets.



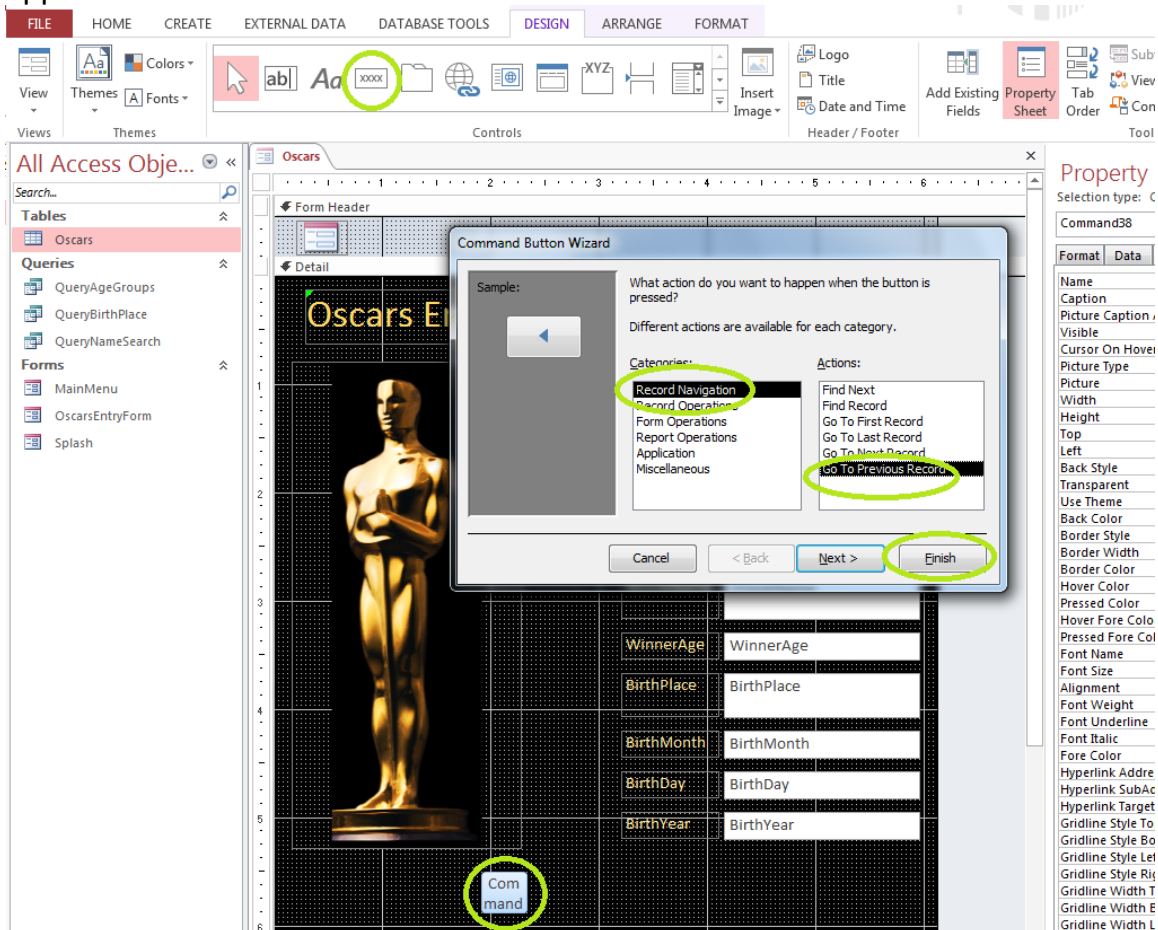
18. Select the label. Then, by selecting things at the side (ForeColor, FontSize) change its properties.\



19. Fiddle with the properties until it looks like this.



20. Add some buttons. Click on the command button, place it on the screen and the dialog will appear.



The screenshot shows the Microsoft Access interface. The 'Command Button Wizard' dialog box is open, displaying the 'Record Navigation' category and the 'Go To Previous Record' action. The 'Finish' button is highlighted. In the background, the 'Oscars Entry Form' is visible, and a 'Command' button is circled in green at the bottom left. The 'Property Sheet' on the right shows the 'Command38' property.



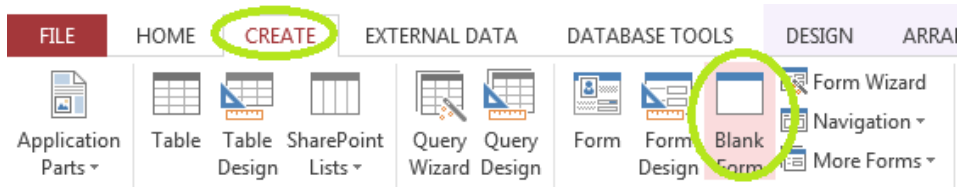
21. You need 4 buttons

1	Record Navigation	Go To Previous Record
2	Record Navigation	Go To Next Record
3	Record Operations	Add New Record
4	Record Operations	Delete Record

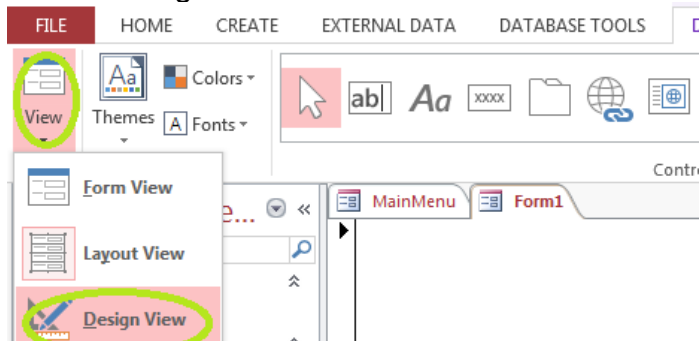
22. When done, the Entry Form look like this. Save it as OscarsEntryForm.

## D. Main Menu

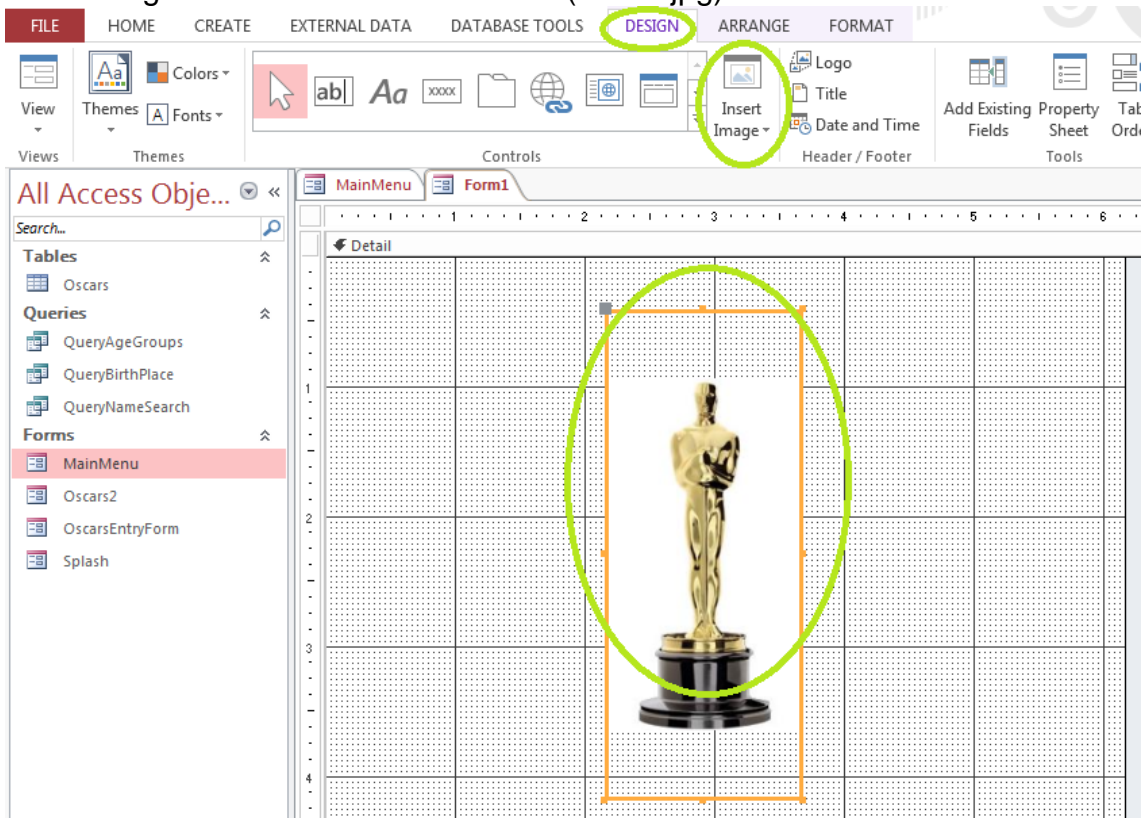
23. Create a blank form.



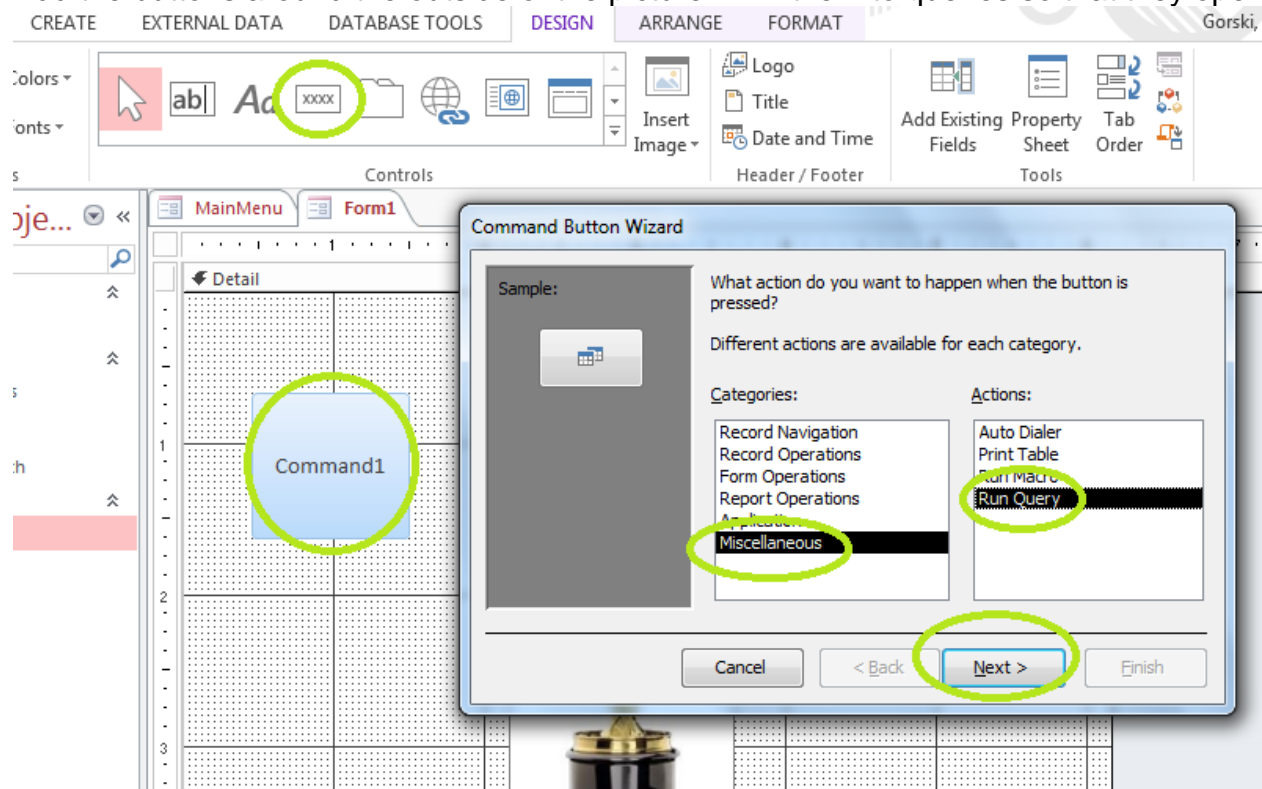
24. Switch the design view.



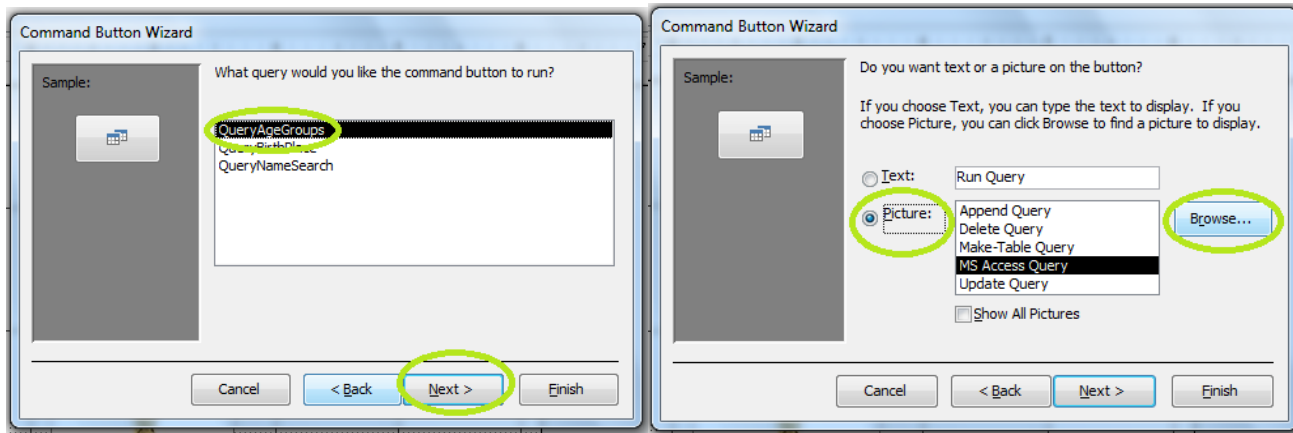
25. Insert an image into the middle of the form (Oscar.jpg)



26. Add the buttons around the outside of the picture. Link them to queries so that they open them.



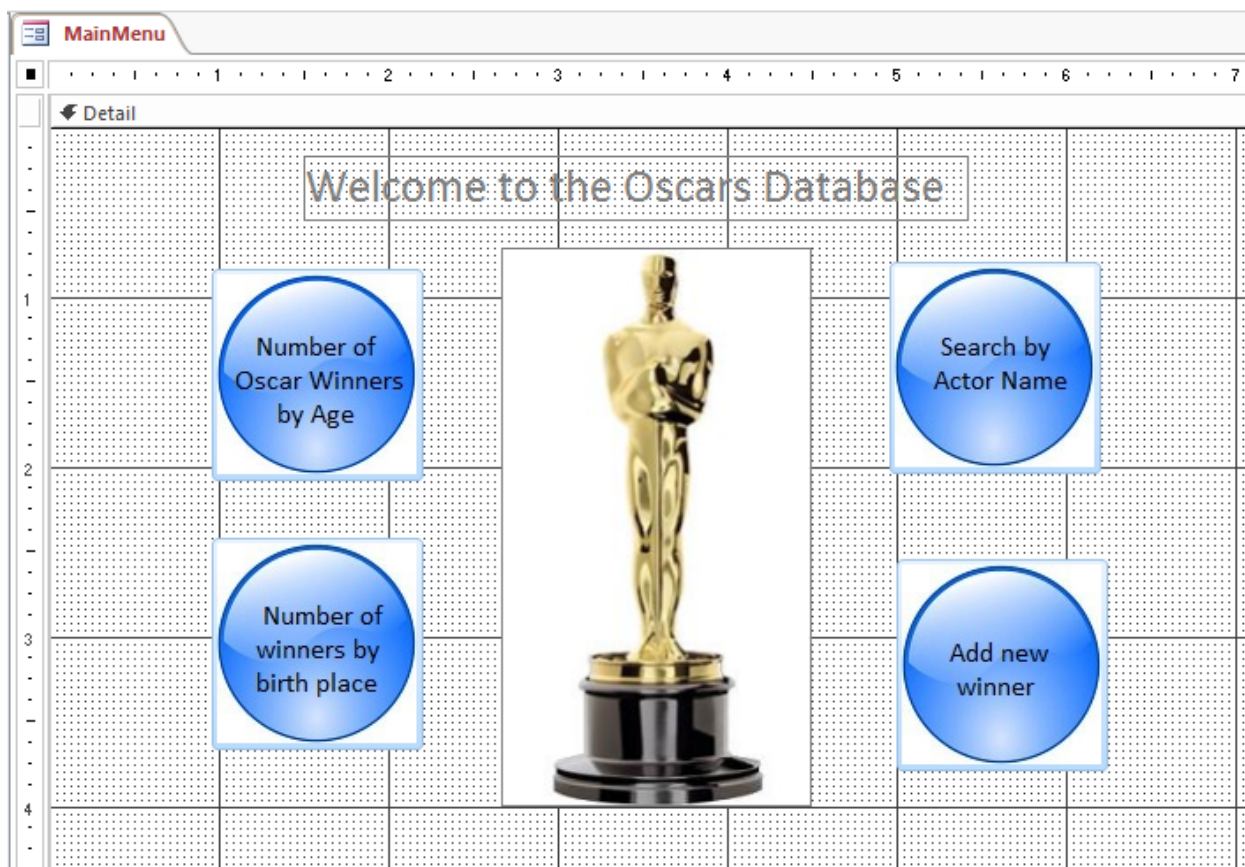




The four buttons and their information:

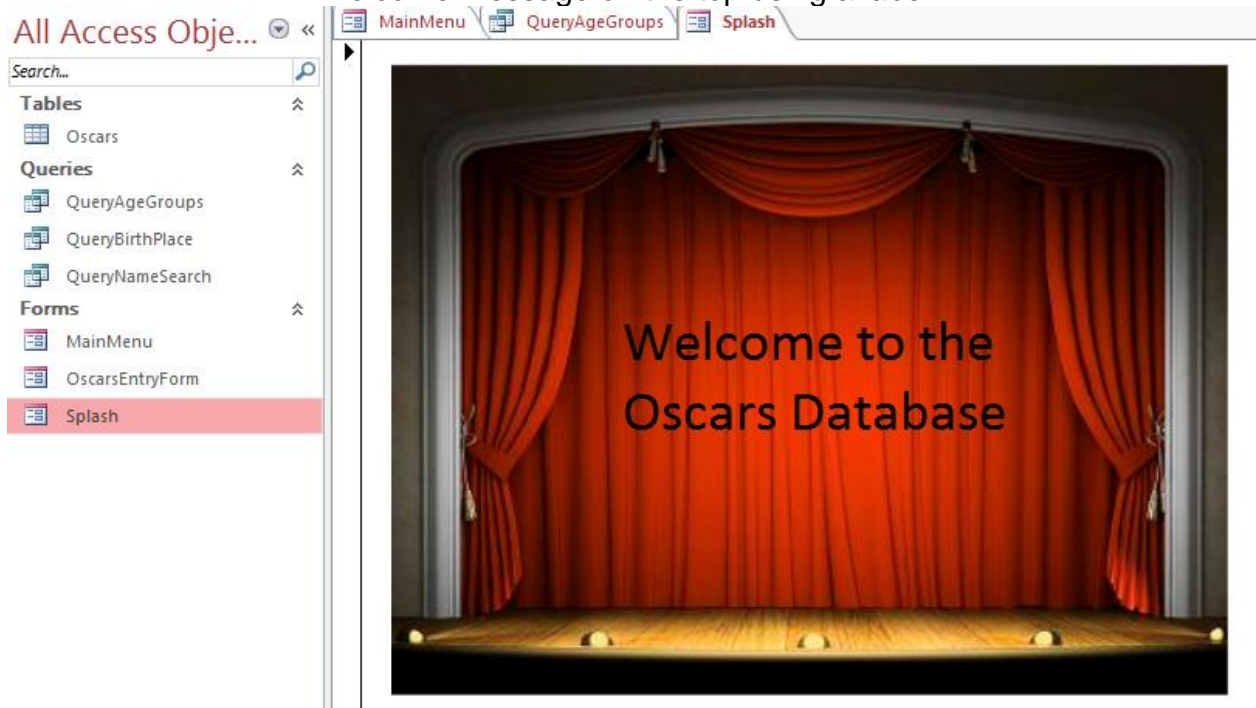
Category	Action	Query	Picture
Miscellaneous	Run Query	QueryAgeGroups	byAge.bmp
Miscellaneous	Run Query	QueryBirthPlace	byBirthPlace.bmp
Miscellaneous	Run Query	QueryNameSearch	byActorName.bmp
Form Operations	Open a Form	OscarsEntryForm	newWinner.bmp

This is created. Save it as MainMenu.



## E. Splash Screen

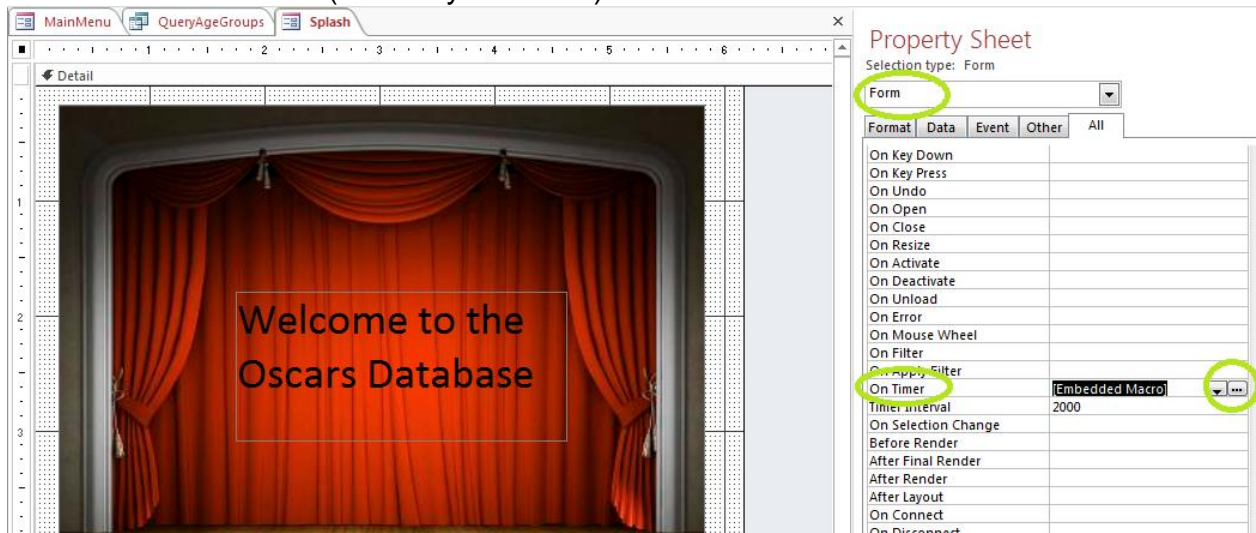
27. As with the Main Menu, create a blank form. Add the image curtain\_splash.jpg to it. Put the welcome message on the top using a label.



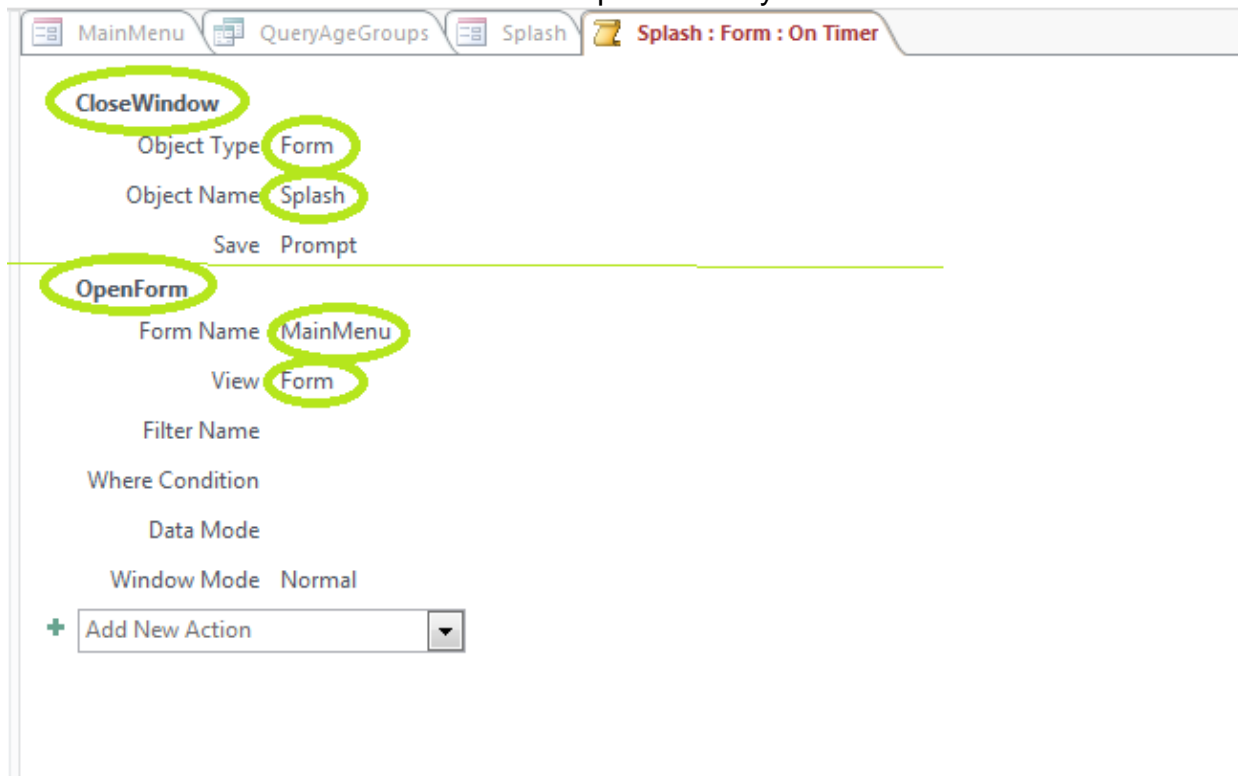
28. Save. You should have the above objects.

29. Switch to design view. Show the property sheet.

30. Search for "On Timer" (it's really far down). Click on the ...



31. You are in Access' version of a macro builder. It is called a scripting environment. Click on add new action twice. Then choose from the options until you have this.

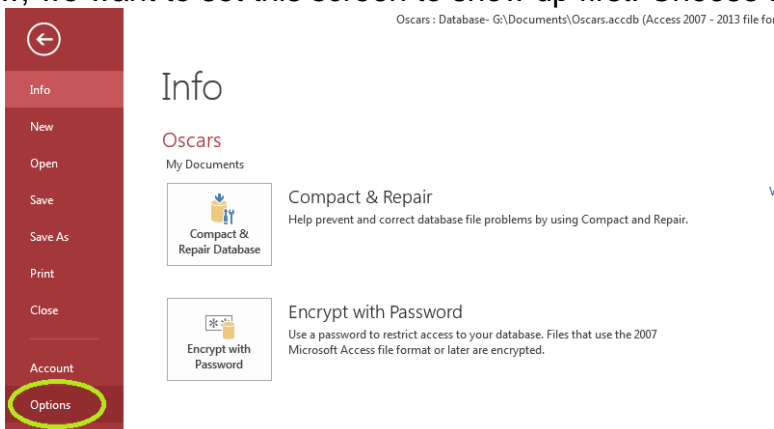


32. Click on the close button.

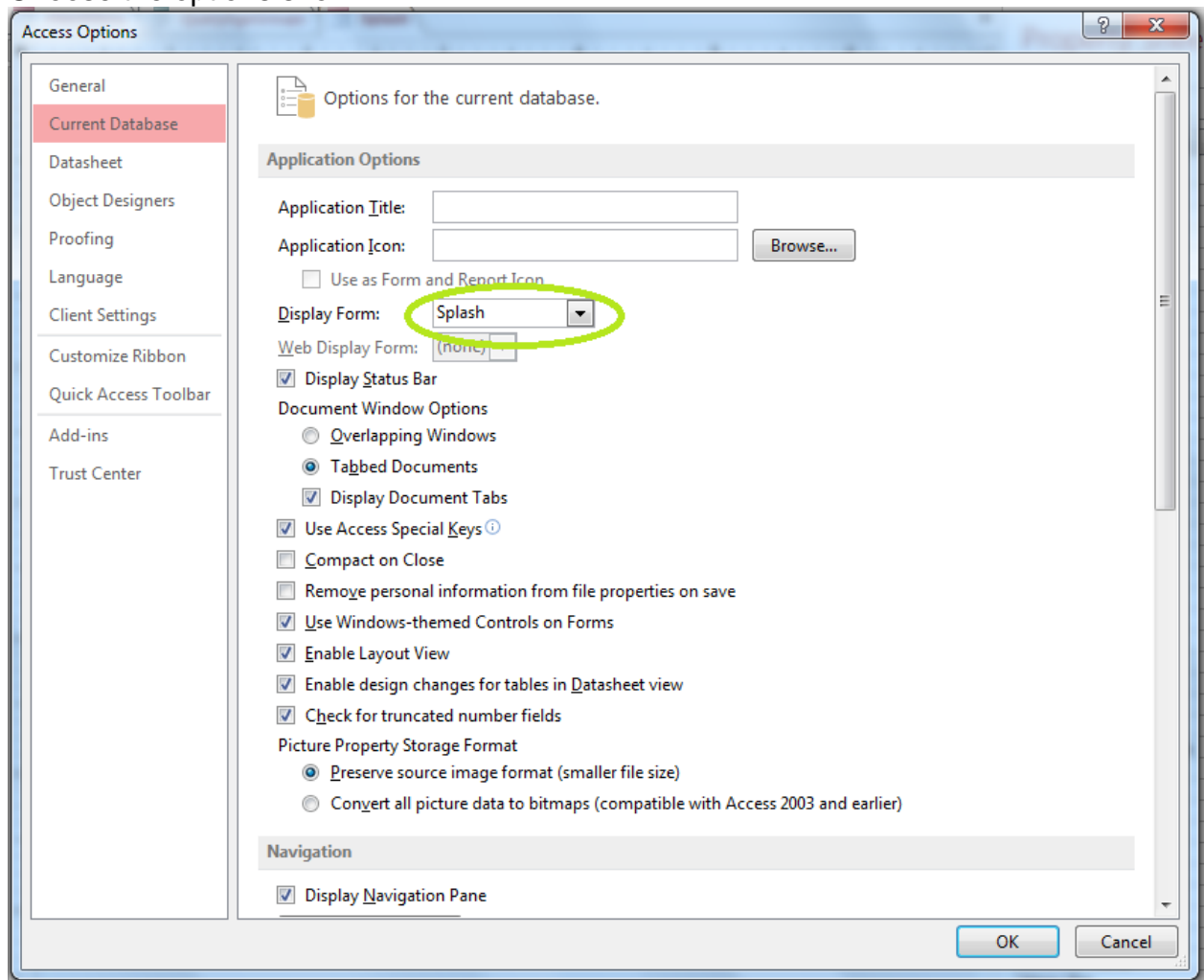
33. Back on properties, change the timer interval to about 2000. (This time works on the school computers)

On Unload	
On Error	
On Mouse Wheel	
On Filter	
On Apply Filter	
On Timer	[Embedded Macro]
Timer Interval	2000
On Selection Change	
Before Render	
After Final Render	

34. Now, we want to set this screen to show up first. Choose File ... Options



35. Choose the options shown.



36. Note, if it doesn't work – and the timer settings are wrong, right-click on the Splash Object and choose design view.

37. Testing. See if your database works.

- A. Open the splash screen. It should disappear and open the main menu.
- B. On the main menu, test each button
- C. On the entry form, move forward and back using your buttons.